



ELECTRONIC COPY

LG793633294
Report verification at igi.org



April 30, 2026
IGI Report Number **LG793633294**

Description **LABORATORY GROWN DIAMOND**

Shape and Cutting Style **OVAL BRILLIANT**

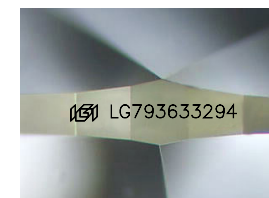
Measurements **9.26 X 6.56 X 4.08 MM**

GRADING RESULTS

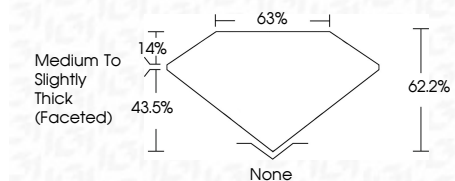
Carat Weight **1.55 CARAT**

Color Grade **D**

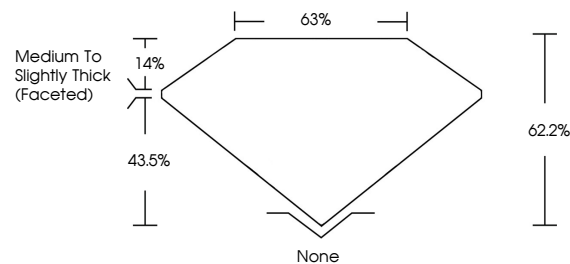
Clarity Grade **VVS 1**



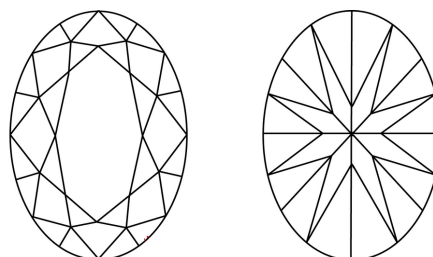
Sample Image Used



PROPORTIONS



CLARITY CHARACTERISTICS



KEY TO SYMBOLS

Red symbols indicate internal characteristics.
Green symbols indicate external characteristics.

COLOR

D E F G H I J Faint Very Light Light

CLARITY

| FL | IF | VVS ¹⁻² | VS ¹⁻² | SI ¹⁻² | I ¹⁻³ |
|----------|---------------------|-----------------------------|------------------------|-------------------|------------------|
| Flawless | Internally Flawless | Very Very Slightly Included | Very Slightly Included | Slightly Included | Included |

ADDITIONAL GRADING INFORMATION

Polish **EXCELLENT**

Symmetry **EXCELLENT**

Fluorescence **NONE**

Inscription(s) **IGI LG793633294**

Comments: As Grown - No indication of post-growth treatment.

This Laboratory Grown Diamond was created by High Pressure High Temperature (HPHT) growth process. Type II



April 30, 2026
IGI Report No. LG793633294
OVAL BRILLIANT
9.26 X 6.56 X 4.08 MM
1.55 CARAT
D
VVS 1
62.2%
63%
Medium to Slightly Thick (Faceted)
None
EXCELLENT
EXCELLENT
NONE
IGI LG793633294
Comments: As Grown - No indication of post-growth treatment. This Laboratory Grown Diamond was created by High Pressure High Temperature (HPHT) growth process. Type II