



ELECTRONIC COPY

LG793631239
Report verification at igi.org



April 30, 2026
IGI Report Number **LG793631239**
Description **LABORATORY GROWN DIAMOND**
Shape and Cutting Style **SQUARE CUSHION MODIFIED BRILLIANT**

Measurements **12.70 X 12.09 X 7.56 MM**

GRADING RESULTS

Carat Weight **10.22 CARATS**
Color Grade **FANCY VIVID YELLOW**
Clarity Grade **VS 2**

April 30, 2026
IGI Report Number **LG793631239**
Description **LABORATORY GROWN DIAMOND**
Shape and Cutting Style **SQUARE CUSHION MODIFIED BRILLIANT**
Measurements **12.70 X 12.09 X 7.56 MM**

GRADING RESULTS

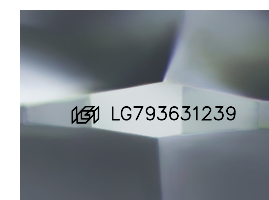
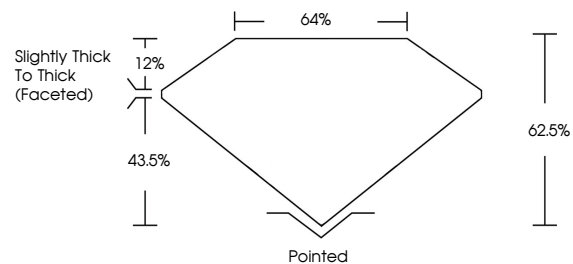
Carat Weight **10.22 CARATS**
Color Grade **FANCY VIVID YELLOW**
Clarity Grade **VS 2**

ADDITIONAL GRADING INFORMATION

Polish **EXCELLENT**
Symmetry **EXCELLENT**
Fluorescence **NONE**
Inscription(s) **IGI LG793631239**

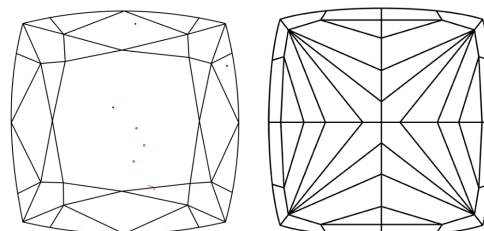
Comments: This Laboratory Grown Diamond was created by Chemical Vapor Deposition (CVD) growth process.

PROPORTIONS



Sample Image Used

CLARITY CHARACTERISTICS



KEY TO SYMBOLS

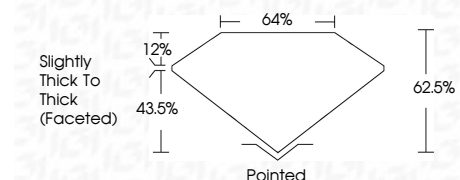
Red symbols indicate internal characteristics.
Green symbols indicate external characteristics.

COLOR

D E F G H I J Faint Very Light Light

CLARITY

FL	IF	VS ¹⁻²	VS ¹⁻²	SI ¹⁻²	I ¹⁻³
Flawless	Internally Flawless	Very Very Slightly Included	Very Slightly Included	Slightly Included	Included



ADDITIONAL GRADING INFORMATION

Polish **EXCELLENT**
Symmetry **EXCELLENT**
Fluorescence **NONE**
Inscription(s) **IGI LG793631239**
Comments: This Laboratory Grown Diamond was created by Chemical Vapor Deposition (CVD) growth process.



April 30, 2026
IGI Report No. LG793631239
SQUARE CUSHION MODIFIED BRILLIANT
12.70 X 12.09 X 7.56 MM
Carat Weight **10.22 CARATS**
Color Grade **FANCY VIVID YELLOW**
Clarity Grade **VS 2**
Table **64%**
Girdle **Slightly Thick To Thick (Faceted)**
Culet **Pointed**
Polish **EXCELLENT**
Symmetry **EXCELLENT**
Fluorescence **NONE**
Inscription(s) **IGI LG793631239**
Comments: This Laboratory Grown Diamond was created by Chemical Vapor Deposition (CVD) growth process.