



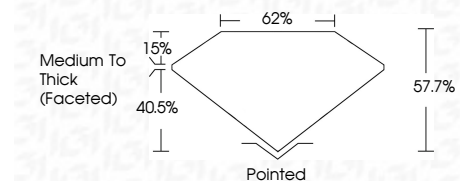
ELECTRONIC COPY

LG793631067
Report verification at igi.org



May 4, 2026
IGI Report Number **LG793631067**
Description **LABORATORY GROWN DIAMOND**
Shape and Cutting Style **HEART BRILLIANT**
Measurements **7.06 X 8.09 X 4.67 MM**

GRADING RESULTS
Carat Weight **1.58 CARAT**
Color Grade **D**
Clarity Grade **VVS 2**



ADDITIONAL GRADING INFORMATION
Polish **VERY GOOD**
Symmetry **VERY GOOD**
Fluorescence **NONE**
Inscription(s) **IGI LG793631067**
Comments: This Laboratory Grown Diamond was created by Chemical Vapor Deposition (CVD) growth process. Type IIa



May 4, 2026
IGI Report No LG793631067
HEART BRILLIANT
1.58 CARAT
D
7.06 X 8.09 X 4.67 MM
Carat Weight
Color Grade
Clarity Grade
Depth
Table
Girdle
Medium To Thick (Faceted)
Pointed
Polish
Symmetry
Fluorescence
Inscription(s)
VERY GOOD
VERY GOOD
NONE
IGI LG793631067
Comments: This Laboratory Grown Diamond was created by Chemical Vapor Deposition (CVD) growth process. Type IIa

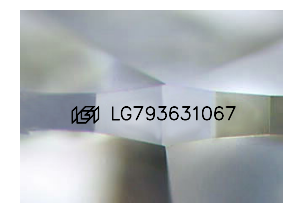
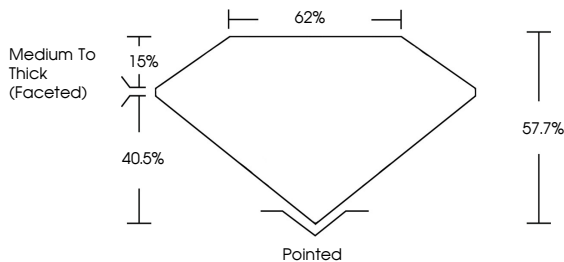
May 4, 2026
IGI Report Number **LG793631067**
Description **LABORATORY GROWN DIAMOND**
Shape and Cutting Style **HEART BRILLIANT**
Measurements **7.06 X 8.09 X 4.67 MM**

GRADING RESULTS
Carat Weight **1.58 CARAT**
Color Grade **D**
Clarity Grade **VVS 2**

ADDITIONAL GRADING INFORMATION
Polish **VERY GOOD**
Symmetry **VERY GOOD**
Fluorescence **NONE**
Inscription(s) **IGI LG793631067**

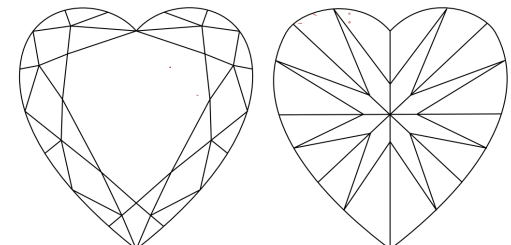
Comments: This Laboratory Grown Diamond was created by Chemical Vapor Deposition (CVD) growth process. Type IIa

PROPORTIONS



Sample Image Used

CLARITY CHARACTERISTICS



KEY TO SYMBOLS
Red symbols indicate internal characteristics.
Green symbols indicate external characteristics.

COLOR

D	E	F	G	H	I	J	Faint	Very Light	Light
---	---	---	---	---	---	---	-------	------------	-------

CLARITY

FL	IF	VVS ¹⁻²	VS ¹⁻²	SI ¹⁻²	I ¹⁻³
Flawless	Internally Flawless	Very Very Slightly Included	Very Slightly Included	Slightly Included	Included

