



ELECTRONIC COPY

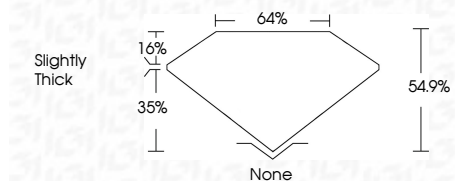
LG793628904
Report verification at igi.org



April 20, 2026
IGI Report Number **LG793628904**
Description **LABORATORY GROWN DIAMOND**
Shape and Cutting Style **MODIFIED KITE STEP CUT**
Measurements **10.48 X 6.59 X 3.62 MM**

GRADING RESULTS

Carat Weight **1.50 CARAT**
Color Grade **D**
Clarity Grade **VS 1**

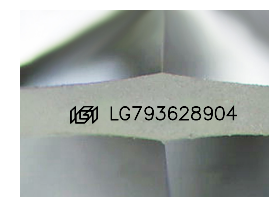


ADDITIONAL GRADING INFORMATION

Polish **EXCELLENT**
Symmetry **EXCELLENT**
Fluorescence **NONE**
Inscription(s) **IGI LG793628904**
Comments: This Laboratory Grown Diamond was created by Chemical Vapor Deposition (CVD) growth process. Type IIa

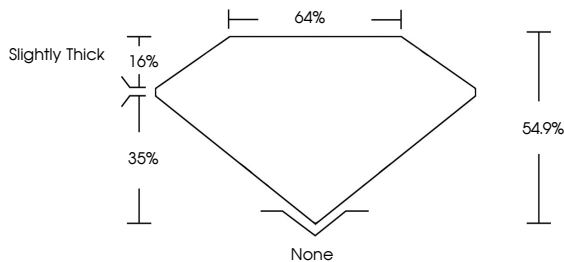


April 20, 2026
IGI Report No LG793628904
MODIFIED KITE STEP CUT
10.48 X 6.59 X 3.62 MM
1.50 CARAT
Color Grade **D**
Depth **35%**
Table **16%**
Girdle **Slightly Thick**
Clarity **VS 1**
Height **54.9%**
None
Polish **EXCELLENT**
Symmetry **EXCELLENT**
Fluorescence **NONE**
Inscription(s) **IGI LG793628904**
Comments: This Laboratory Grown Diamond was created by Chemical Vapor Deposition (CVD) growth process. Type IIa

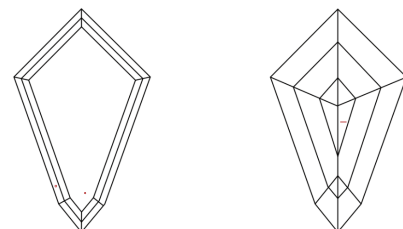


Sample Image Used

PROPORTIONS



CLARITY CHARACTERISTICS



KEY TO SYMBOLS

Red symbols indicate internal characteristics.
Green symbols indicate external characteristics.

COLOR

D	E	F	G	H	I	J	Faint	Very Light	Light
---	---	---	---	---	---	---	-------	------------	-------

CLARITY

FL	IF	VS ¹⁻²	VS ¹⁻²	SI ¹⁻²	I ¹⁻³
Flawless	Internally Flawless	Very Very Slightly Included	Very Slightly Included	Slightly Included	Included

