



ELECTRONIC COPY

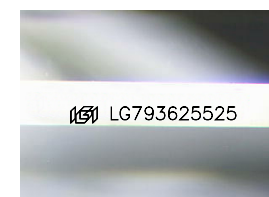
LG793625525
Report verification at igi.org



April 20, 2026
IGI Report Number **LG793625525**
Description **LABORATORY GROWN DIAMOND**
Shape and Cutting Style **EMERALD CUT**
Measurements **15.83 X 11.10 X 7.26 MM**

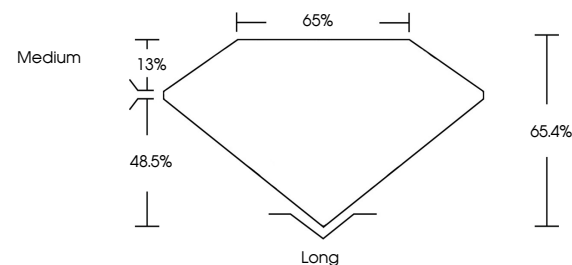
GRADING RESULTS

Carat Weight **12.48 CARATS**
Color Grade **E**
Clarity Grade **VS 1**

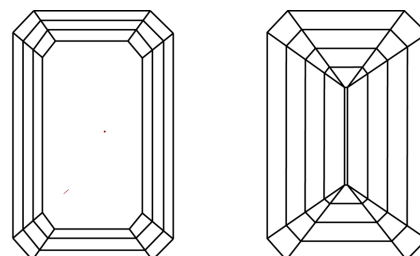


Sample Image Used

PROPORTIONS



CLARITY CHARACTERISTICS



KEY TO SYMBOLS

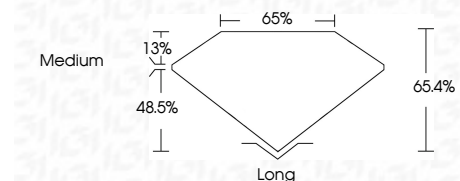
Red symbols indicate internal characteristics.
Green symbols indicate external characteristics.

COLOR

D E F G H I J Faint Very Light Light

CLARITY

FL	IF	VS ¹⁻²	VS ¹⁻²	SI ¹⁻²	I ¹⁻³
Flawless	Internally Flawless	Very Very Slightly Included	Very Slightly Included	Slightly Included	Included



ADDITIONAL GRADING INFORMATION

Polish **EXCELLENT**
Symmetry **EXCELLENT**
Fluorescence **NONE**
Inscription(s) **IGI LG793625525**
Comments: This Laboratory Grown Diamond was created by Chemical Vapor Deposition (CVD) growth process. Type IIa



April 20, 2026
IGI Report No. **LG793625525**
EMERALD CUT
15.83 X 11.10 X 7.26 MM
12.48 CARATS
E
VS 1
65.4%
48.5%
Medium
Long
EXCELLENT
EXCELLENT
NONE
IGI LG793625525
Comments: This Laboratory Grown Diamond was created by Chemical Vapor Deposition (CVD) growth process. Type IIa