



April 18, 2026

IGI Report Number **LG793622957**

**OVAL BRILLIANT
LABORATORY GROWN DIAMOND
7.94 X 5.35 X 3.24 MM**

Carat Weight	0.85 CARAT
Color Grade	D
Clarity Grade	VS 1
Cut Grade	EXCELLENT
Polish	EXCELLENT
Symmetry	EXCELLENT
Fluorescence	NONE
Inscription(s)	IGI LG793622957

Comments: As Grown - No indication of post-growth treatment. This Laboratory Grown Diamond was created by High Pressure High Temperature (HPHT) growth process. Type II

LABORATORY GROWN DIAMOND REPORT

April 18, 2026

IGI Report Number

LG793622957

Description

LABORATORY GROWN DIAMOND

Shape and Cutting Style

OVAL BRILLIANT

Measurements

7.94 X 5.35 X 3.24 MM

GRADING RESULTS

Carat Weight

0.85 CARAT

Color Grade

D

Clarity Grade

VS 1

Cut Grade

EXCELLENT

ADDITIONAL GRADING INFORMATION

Polish

EXCELLENT

Symmetry

EXCELLENT

Fluorescence

NONE

Inscription(s)

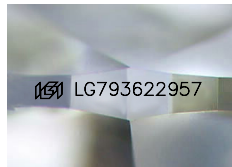
IGI LG793622957

Comments: As Grown - No indication of post-growth treatment.

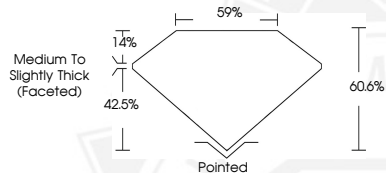
This Laboratory Grown Diamond was created by High Pressure High

Temperature (HPHT) growth process.

Type II



Sample Image Used



April 18, 2026

IGI Report Number **LG793622957**

**OVAL BRILLIANT
LABORATORY GROWN DIAMOND
7.94 X 5.35 X 3.24 MM**

Carat Weight	0.85 CARAT
Color Grade	D
Clarity Grade	VS 1
Cut Grade	EXCELLENT
Polish	EXCELLENT
Symmetry	EXCELLENT
Fluorescence	NONE
Inscription(s)	IGI LG793622957

Comments: As Grown - No indication of post-growth treatment. This Laboratory Grown Diamond was created by High Pressure High Temperature (HPHT) growth process. Type II



THIS DOCUMENT WAS PRODUCED WITH THE FOLLOWING SECURITY MEASURES: SPECIAL DOCUMENT PAPER, INK SCREENS, WATERMARK, BACKGROUND DESIGNS, HOLOGRAM AND OTHER SECURITY FEATURES NOT LISTED AND DO EXCEED DOCUMENT SECURITY INDUSTRY GUIDELINES.