



ELECTRONIC COPY

LG793622663
Report verification at igi.org



April 23, 2026

IGI Report Number **LG793622663**

Description **LABORATORY GROWN DIAMOND**

Shape and Cutting Style **PRINCESS CUT**

Measurements **6.42 X 6.36 X 4.57 MM**

GRADING RESULTS

Carat Weight **1.66 CARAT**

Color Grade **FANCY VIVID PINK**

Clarity Grade **VVS 2**

April 23, 2026
IGI Report Number **LG793622663**
Description **LABORATORY GROWN DIAMOND**
Shape and Cutting Style **PRINCESS CUT**
Measurements **6.42 X 6.36 X 4.57 MM**

GRADING RESULTS

Carat Weight **1.66 CARAT**

Color Grade **FANCY VIVID PINK**

Clarity Grade **VVS 2**

ADDITIONAL GRADING INFORMATION

Polish **EXCELLENT**

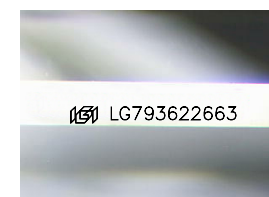
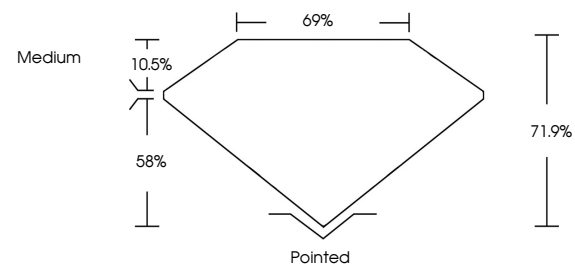
Symmetry **VERY GOOD**

Fluorescence **SLIGHT**

Inscription(s) **LG793622663**

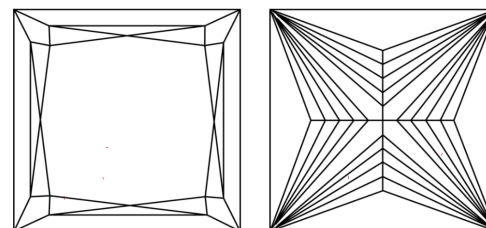
Comments: This Laboratory Grown Diamond was created by High Pressure High Temperature (HPHT) growth process. Indications of post-growth treatment.

PROPORTIONS



Sample Image Used

CLARITY CHARACTERISTICS



KEY TO SYMBOLS

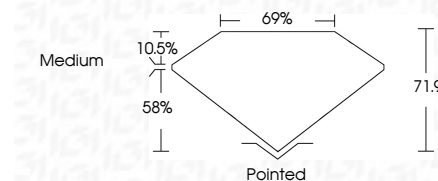
Red symbols indicate internal characteristics.
Green symbols indicate external characteristics.

COLOR

D E F G H I J Faint Very Light Light

CLARITY

FL	IF	VVS ¹⁻²	VS ¹⁻²	SI ¹⁻²	I ¹⁻³
Flawless	Internally Flawless	Very Very Slightly Included	Very Slightly Included	Slightly Included	Included



ADDITIONAL GRADING INFORMATION

Polish **EXCELLENT**

Symmetry **VERY GOOD**

Fluorescence **SLIGHT**

Inscription(s) **LG793622663**

Comments: This Laboratory Grown Diamond was created by High Pressure High Temperature (HPHT) growth process. Indications of post-growth treatment.



IGI



April 23, 2026
IGI Report No **LG793622663**
PRINCESS CUT
6.42 X 6.36 X 4.57 MM
Carat Weight **1.66 CARAT**
Color Grade **FANCY VIVID PINK**
Clarity Grade **VVS 2**
Depth **58%**
Table **10.5%**
Girdle **Medium**
Culet **Pointed**
Polish **EXCELLENT**
Symmetry **VERY GOOD**
Fluorescence **SLIGHT**
Inscription(s) **LG793622663**

Comments: This Laboratory Grown Diamond was created by High Pressure High Temperature (HPHT) growth process. Indications of post-growth treatment.