



**ELECTRONIC COPY**

LG793622655  
Report verification at igi.org



April 23, 2026

IGI Report Number **LG793622655**

Description **LABORATORY GROWN DIAMOND**

Shape and Cutting Style **PRINCESS CUT**

Measurements **6.49 X 6.39 X 4.38 MM**

**GRADING RESULTS**

Carat Weight **1.58 CARAT**

Color Grade **FANCY VIVID BLUE**

Clarity Grade **SI 1**

April 23, 2026  
IGI Report Number **LG793622655**  
Description **LABORATORY GROWN DIAMOND**  
Shape and Cutting Style **PRINCESS CUT**  
Measurements **6.49 X 6.39 X 4.38 MM**

**GRADING RESULTS**

Carat Weight **1.58 CARAT**

Color Grade **FANCY VIVID BLUE**

Clarity Grade **SI 1**

**ADDITIONAL GRADING INFORMATION**

Polish **VERY GOOD**

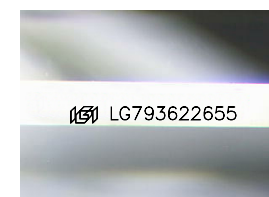
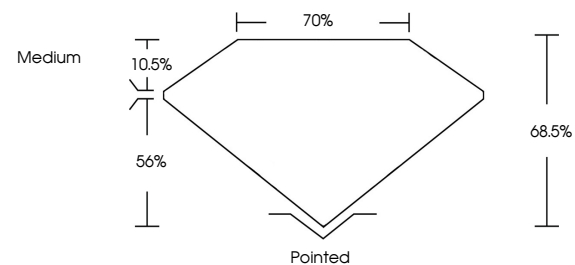
Symmetry **GOOD**

Fluorescence **NONE**

Inscription(s) **IGI LG793622655**

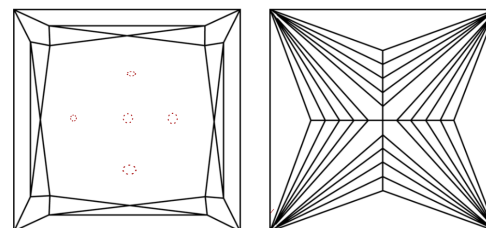
Comments: This Laboratory Grown Diamond was created by Chemical Vapor Deposition (CVD) growth process. Indications of post-growth treatment.

**PROPORTIONS**



Sample Image Used

**CLARITY CHARACTERISTICS**



**KEY TO SYMBOLS**

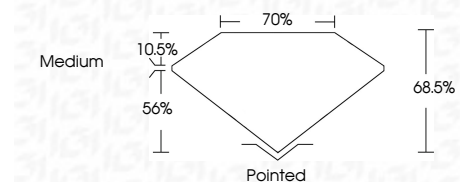
Red symbols indicate internal characteristics.  
Green symbols indicate external characteristics.

**COLOR**

D E F G H I J Faint Very Light Light

**CLARITY**

FL	IF	VS <sup>1-2</sup>	VS <sup>1-2</sup>	SI <sup>1-2</sup>	I <sup>1-3</sup>
Flawless	Internally Flawless	Very Very Slightly Included	Very Slightly Included	Slightly Included	Included



**ADDITIONAL GRADING INFORMATION**

Polish **VERY GOOD**

Symmetry **GOOD**

Fluorescence **NONE**

Inscription(s) **IGI LG793622655**

Comments: This Laboratory Grown Diamond was created by Chemical Vapor Deposition (CVD) growth process. Indications of post-growth treatment.



April 23, 2026  
IGI Report No **LG793622655**  
**PRINCESS CUT**  
**1.58 CARAT**  
Carat Weight  
Color Grade **FANCY VIVID BLUE**  
Clarity Grade **SI 1**  
Depth **68.5%**  
Table **70%**  
Girdle **Medium**  
Culet **Pointed**  
Polish **VERY GOOD**  
Symmetry **GOOD**  
Fluorescence **NONE**  
Inscription(s) **IGI LG793622655**  
Comments: This Laboratory Grown Diamond was created by Chemical Vapor Deposition (CVD) growth process. Indications of post-growth treatment.