



**ELECTRONIC COPY**

LG793622629  
Report verification at igi.org



April 23, 2026

IGI Report Number **LG793622629**

Description **LABORATORY GROWN DIAMOND**

Shape and Cutting Style **PRINCESS CUT**

Measurements **6.35 X 6.26 X 4.36 MM**

**GRADING RESULTS**

Carat Weight **1.50 CARAT**

Color Grade **FANCY VIVID BLUE**

Clarity Grade **SI 1**

April 23, 2026  
IGI Report Number **LG793622629**  
Description **LABORATORY GROWN DIAMOND**  
Shape and Cutting Style **PRINCESS CUT**  
Measurements **6.35 X 6.26 X 4.36 MM**

**GRADING RESULTS**

Carat Weight **1.50 CARAT**

Color Grade **FANCY VIVID BLUE**

Clarity Grade **SI 1**

**ADDITIONAL GRADING INFORMATION**

Polish **VERY GOOD**

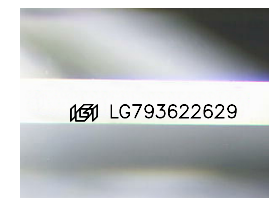
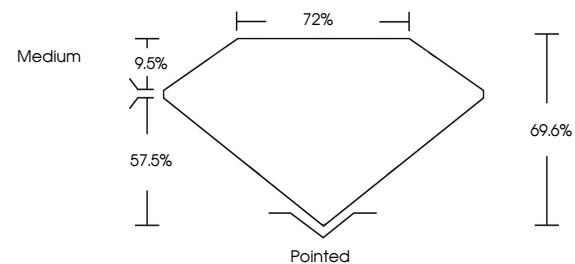
Symmetry **VERY GOOD**

Fluorescence **NONE**

Inscription(s) **IGI LG793622629**

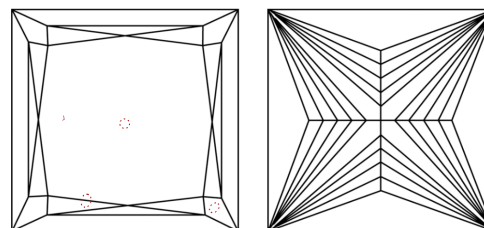
Comments: This Laboratory Grown Diamond was created by Chemical Vapor Deposition (CVD) growth process. Indications of post-growth treatment.

**PROPORTIONS**



Sample Image Used

**CLARITY CHARACTERISTICS**



**KEY TO SYMBOLS**

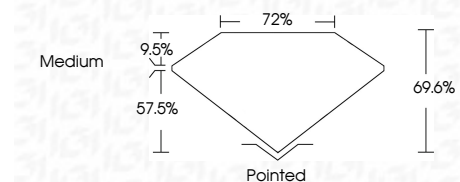
Red symbols indicate internal characteristics.  
Green symbols indicate external characteristics.

**COLOR**

D E F G H I J Faint Very Light Light

**CLARITY**

FL	IF	VS <sup>1-2</sup>	VS <sup>1-2</sup>	SI <sup>1-2</sup>	I <sup>1-3</sup>
Flawless	Internally Flawless	Very Very Slightly Included	Very Slightly Included	Slightly Included	Included



**ADDITIONAL GRADING INFORMATION**

Polish **VERY GOOD**

Symmetry **VERY GOOD**

Fluorescence **NONE**

Inscription(s) **IGI LG793622629**

Comments: This Laboratory Grown Diamond was created by Chemical Vapor Deposition (CVD) growth process. Indications of post-growth treatment.



**IGI**



April 23, 2026  
IGI Report No. **LG793622629**  
**PRINCESS CUT**  
1.50 CARAT  
6.35 X 6.26 X 4.36 MM  
FANCY VIVID BLUE  
SI 1  
69.6%  
72%  
Medium  
Pointed  
VERY GOOD  
VERY GOOD  
NONE  
IGI LG793622629

Comments: This Laboratory Grown Diamond was created by Chemical Vapor Deposition (CVD) growth process. Indications of post-growth treatment.