



ELECTRONIC COPY

LG793622604
Report verification at igi.org



May 2, 2026
IGI Report Number **LG793622604**
Description **LABORATORY GROWN DIAMOND**
Shape and Cutting Style **PEAR MODIFIED BRILLIANT**
Measurements **8.85 X 5.09 X 3.52 MM**
GRADING RESULTS
Carat Weight **1.15 CARAT**
Color Grade **FANCY INTENSE YELLOW**
Clarity Grade **VVS 2**

May 2, 2026
IGI Report Number **LG793622604**
Description **LABORATORY GROWN DIAMOND**
Shape and Cutting Style **PEAR MODIFIED BRILLIANT**
Measurements **8.85 X 5.09 X 3.52 MM**

GRADING RESULTS

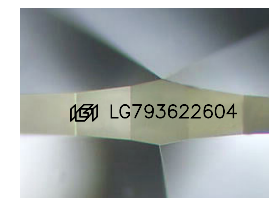
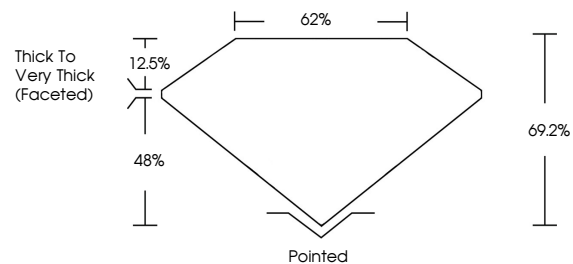
Carat Weight **1.15 CARAT**
Color Grade **FANCY INTENSE YELLOW**
Clarity Grade **VVS 2**

ADDITIONAL GRADING INFORMATION

Polish **EXCELLENT**
Symmetry **EXCELLENT**
Fluorescence **NONE**
Inscription(s) **IGI LG793622604**

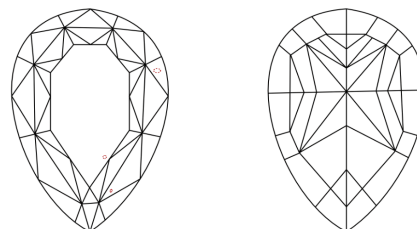
Comments: This Laboratory Grown Diamond was created by Chemical Vapor Deposition (CVD) growth process.

PROPORTIONS



Sample Image Used

CLARITY CHARACTERISTICS



KEY TO SYMBOLS

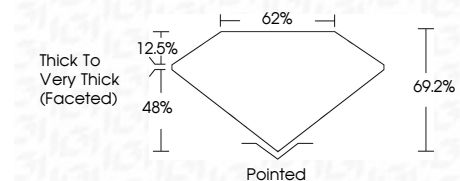
Red symbols indicate internal characteristics.
Green symbols indicate external characteristics.

COLOR

D E F G H I J Faint Very Light Light

CLARITY

FL	IF	VVS ¹⁻²	VS ¹⁻²	SI ¹⁻²	I ¹⁻³
Flawless	Internally Flawless	Very Very Slightly Included	Very Slightly Included	Slightly Included	Included



ADDITIONAL GRADING INFORMATION

Polish **EXCELLENT**
Symmetry **EXCELLENT**
Fluorescence **NONE**
Inscription(s) **IGI LG793622604**
Comments: This Laboratory Grown Diamond was created by Chemical Vapor Deposition (CVD) growth process.



IGI



May 2, 2026
IGI Report No **LG793622604**
PEAR MODIFIED BRILLIANT
8.85 X 5.09 X 3.52 MM
Carat Weight **1.15 CARAT**
Color Grade **FANCY INTENSE YELLOW**
Clarity Grade **VVS 2**
Depth **48%**
Table **12.5%**
Girdle **62%**
Thick to Very Thick (Faceted)
Culet **Pointed**
Polish **EXCELLENT**
Symmetry **EXCELLENT**
Fluorescence **NONE**
Inscription(s) **IGI LG793622604**
Comments: This Laboratory Grown Diamond was created by Chemical Vapor Deposition (CVD) growth process.