



ELECTRONIC COPY

LG793622179
Report verification at igi.org



May 4, 2026
IGI Report Number **LG793622179**
Description **LABORATORY GROWN DIAMOND**
Shape and Cutting Style **CUSHION MODIFIED BRILLIANT**
Measurements **20.71 X 13.27 X 8.49 MM**
GRADING RESULTS
Carat Weight **20.53 CARATS**
Color Grade **FANCY INTENSE PINK**
Clarity Grade **VS 2**

May 4, 2026
IGI Report Number **LG793622179**
Description **LABORATORY GROWN DIAMOND**
Shape and Cutting Style **CUSHION MODIFIED BRILLIANT**
Measurements **20.71 X 13.27 X 8.49 MM**

GRADING RESULTS

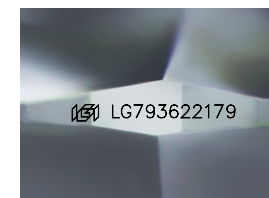
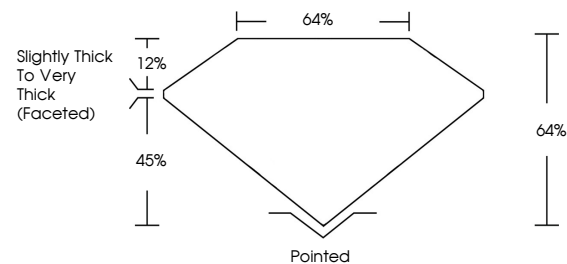
Carat Weight **20.53 CARATS**
Color Grade **FANCY INTENSE PINK**
Clarity Grade **VS 2**

ADDITIONAL GRADING INFORMATION

Polish **EXCELLENT**
Symmetry **EXCELLENT**
Fluorescence **STRONG**
Inscription(s) **IGI LG793622179**

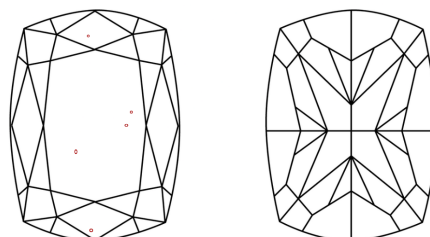
Comments: This Laboratory Grown Diamond was created by Chemical Vapor Deposition (CVD) growth process.
Indications of post-growth treatment.

PROPORTIONS



Sample Image Used

CLARITY CHARACTERISTICS



KEY TO SYMBOLS

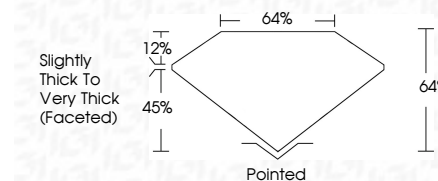
Red symbols indicate internal characteristics.
Green symbols indicate external characteristics.

COLOR

D E F G H I J Faint Very Light Light

CLARITY

FL	IF	VS ¹⁻²	VS ¹⁻²	SI ¹⁻²	I ¹⁻³
Flawless	Internally Flawless	Very Very Slightly Included	Very Slightly Included	Slightly Included	Included



ADDITIONAL GRADING INFORMATION

Polish **EXCELLENT**
Symmetry **EXCELLENT**
Fluorescence **STRONG**
Inscription(s) **IGI LG793622179**
Comments: This Laboratory Grown Diamond was created by Chemical Vapor Deposition (CVD) growth process.
Indications of post-growth treatment.



IGI



May 4, 2026
IGI Report No **LG793622179**
CUSHION MODIFIED BRILLIANT
20.53 CARATS
FANCY INTENSE PINK
Carat Weight
Color Grade
Clarity Grade
Depth
Table
Girdle
Slightly Thick To Very Thick (Faceted)
Culet
Polish
Symmetry
Fluorescence
Inscription(s)
20.53 CARATS
FANCY INTENSE PINK
VS 2
64%
64%
Slightly Thick To Very Thick (Faceted)
Pointed
EXCELLENT
EXCELLENT
STRONG
IGI LG793622179

Comments: This Laboratory Grown Diamond was created by Chemical Vapor Deposition (CVD) growth process.
Indications of post-growth treatment.