



ELECTRONIC COPY

LG793620843
Report verification at igi.org



April 20, 2026

IGI Report Number **LG793620843**

Description **LABORATORY GROWN DIAMOND**

Shape and Cutting Style **ROUND BRILLIANT**

Measurements **7.24 - 7.28 X 4.39 MM**

GRADING RESULTS

Carat Weight **1.40 CARAT**

Color Grade **F**

Clarity Grade **VVS 2**

Cut Grade **IDEAL**

April 20, 2026
IGI Report Number **LG793620843**
Description **LABORATORY GROWN DIAMOND**
Shape and Cutting Style **ROUND BRILLIANT**
Measurements **7.24 - 7.28 X 4.39 MM**

GRADING RESULTS

Carat Weight **1.40 CARAT**

Color Grade **F**

Clarity Grade **VVS 2**

Cut Grade **IDEAL**

ADDITIONAL GRADING INFORMATION

Polish **EXCELLENT**

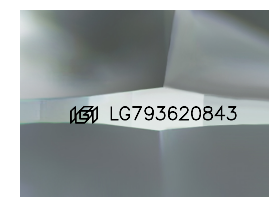
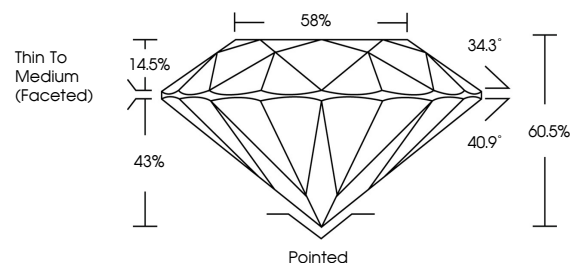
Symmetry **EXCELLENT**

Fluorescence **NONE**

Inscription(s) **IGI LG793620843**

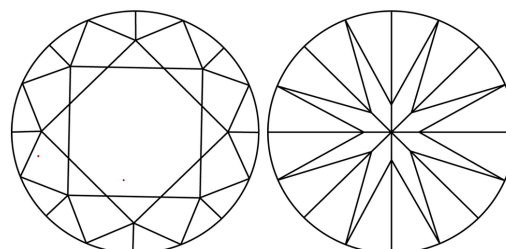
Comments: This Laboratory Grown Diamond was created by Chemical Vapor Deposition (CVD) growth process. Type IIa

PROPORTIONS



Sample Image Used

CLARITY CHARACTERISTICS



KEY TO SYMBOLS

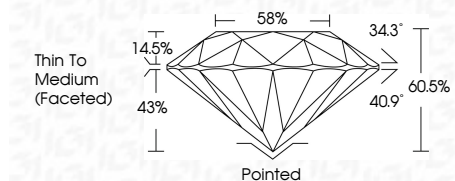
Red symbols indicate internal characteristics.
Green symbols indicate external characteristics.

COLOR

D E F G H I J Faint Very Light Light

CLARITY

FL	IF	VVS ¹⁻²	VS ¹⁻²	SI ¹⁻²	I ¹⁻³
Flawless	Internally Flawless	Very Very Slightly Included	Very Slightly Included	Slightly Included	Included



ADDITIONAL GRADING INFORMATION

Polish **EXCELLENT**

Symmetry **EXCELLENT**

Fluorescence **NONE**

Inscription(s) **IGI LG793620843**

Comments: This Laboratory Grown Diamond was created by Chemical Vapor Deposition (CVD) growth process. Type IIa



April 20, 2026	IGI Report No LG793620843	1.40 CARAT	F
ROUND BRILLIANT	7.24 - 7.28 X 4.39 MM	VVS 2	IDEAL
Carat Weight	Color Grade	Depth	60.5%
Clarity Grade	Cut Grade	Table	58%
Color Grade	Cut Grade	Grille	Thin To Medium (Faceted)
Clarity Grade	Cut Grade	Culet	Pointed
Color Grade	Cut Grade	Polish	EXCELLENT
Clarity Grade	Cut Grade	Symmetry	EXCELLENT
Color Grade	Cut Grade	Fluorescence	NONE
Clarity Grade	Cut Grade	Inscription(s)	IGI LG793620843

Comments: This Laboratory Grown Diamond was created by Chemical Vapor Deposition (CVD) growth process. Type IIa