



**ELECTRONIC COPY**

LG793618366  
Report verification at igi.org



May 8, 2026

IGI Report Number **LG793618366**

Description **LABORATORY GROWN DIAMOND**

Shape and Cutting Style **ROUND BRILLIANT**

Measurements **9.29 - 9.33 X 5.55 MM**

**GRADING RESULTS**

Carat Weight **3.00 CARATS**

Color Grade **F**

Clarity Grade **VS 1**

Cut Grade **EXCELLENT**

May 8, 2026

IGI Report Number **LG793618366**

Description **LABORATORY GROWN DIAMOND**

Shape and Cutting Style **ROUND BRILLIANT**

Measurements **9.29 - 9.33 X 5.55 MM**

**GRADING RESULTS**

Carat Weight **3.00 CARATS**

Color Grade **F**

Clarity Grade **VS 1**

Cut Grade **EXCELLENT**

**ADDITIONAL GRADING INFORMATION**

Polish **EXCELLENT**

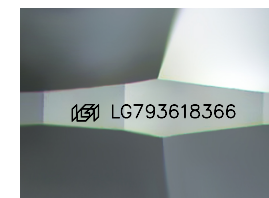
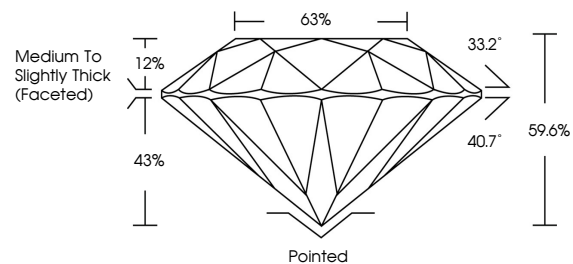
Symmetry **EXCELLENT**

Fluorescence **NONE**

Inscription(s) **LG793618366**

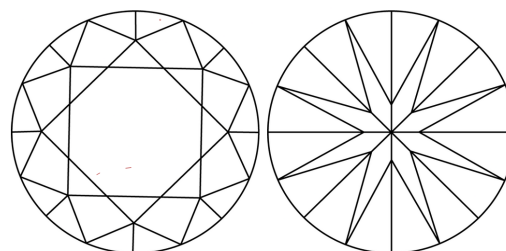
Comments: This Laboratory Grown Diamond was created by Chemical Vapor Deposition (CVD) growth process.  
Type IIa

**PROPORTIONS**



Sample Image Used

**CLARITY CHARACTERISTICS**



**KEY TO SYMBOLS**

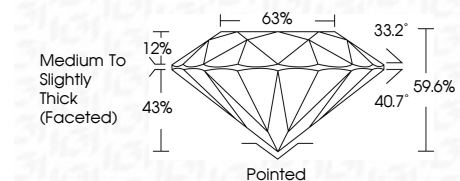
Red symbols indicate internal characteristics.  
Green symbols indicate external characteristics.

**COLOR**

D E F G H I J Faint Very Light Light

**CLARITY**

| FL       | IF                  | VS <sup>1-2</sup>           | VS <sup>1-2</sup>      | SI <sup>1-2</sup> | I <sup>1-3</sup> |
|----------|---------------------|-----------------------------|------------------------|-------------------|------------------|
| Flawless | Internally Flawless | Very Very Slightly Included | Very Slightly Included | Slightly Included | Included         |



**ADDITIONAL GRADING INFORMATION**

Polish **EXCELLENT**

Symmetry **EXCELLENT**

Fluorescence **NONE**

Inscription(s) **LG793618366**

Comments: This Laboratory Grown Diamond was created by Chemical Vapor Deposition (CVD) growth process.  
Type IIa



**IGI**



|                           |                       |             |               |           |       |                                    |                                    |           |           |           |              |                |
|---------------------------|-----------------------|-------------|---------------|-----------|-------|------------------------------------|------------------------------------|-----------|-----------|-----------|--------------|----------------|
| May 8, 2026               | 3.00 CARATS           | F           | VS 1          | EXCELLENT | 63%   | Medium To Slightly Thick (Faceted) | Pointed                            | EXCELLENT | EXCELLENT | NONE      | LG793618366  |                |
| IGI Report No LG793618366 | Carat Weight          | Color Grade | Clarity Grade | Cut Grade | Depth | Table                              | Girdle                             | Culet     | Polish    | Symmetry  | Fluorescence | Inscription(s) |
| ROUND BRILLIANT           | 9.29 - 9.33 X 5.55 MM | F           | VS 1          | EXCELLENT | 59.6% | 43%                                | Medium To Slightly Thick (Faceted) | Pointed   | EXCELLENT | EXCELLENT | NONE         | LG793618366    |

Comments: This Laboratory Grown Diamond was created by Chemical Vapor Deposition (CVD) growth process.  
Type IIa