



ELECTRONIC COPY

LG793618217 Report verification at igi.org



April 17, 2026 IGI Report Number LG793618217 Description LABORATORY GROWN DIAMOND Shape and Cutting Style ROUND BRILLIANT Measurements 7.40 - 7.49 X 4.50 MM GRADING RESULTS Carat Weight 1.54 CARAT Color Grade F Clarity Grade VVS 1 Cut Grade IDEAL

April 17, 2026 IGI Report Number LG793618217 Description LABORATORY GROWN DIAMOND Shape and Cutting Style ROUND BRILLIANT Measurements 7.40 - 7.49 X 4.50 MM

GRADING RESULTS

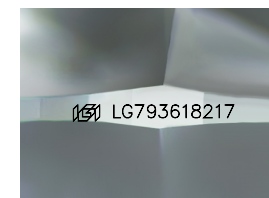
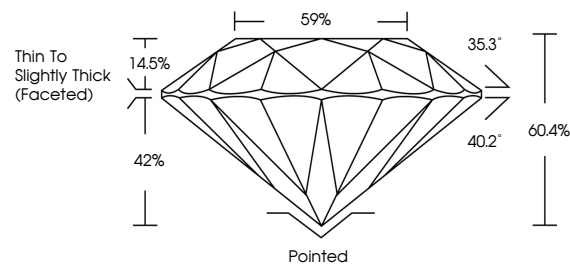
Carat Weight 1.54 CARAT Color Grade F Clarity Grade VVS 1 Cut Grade IDEAL

ADDITIONAL GRADING INFORMATION

Polish VERY GOOD Symmetry VERY GOOD Fluorescence NONE Inscription(s) LG793618217

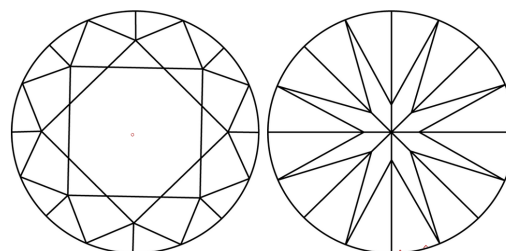
Comments: As Grown - No indication of post-growth treatment. This Laboratory Grown Diamond was created by High Pressure High Temperature (HPHT) growth process. Type II

PROPORTIONS



Sample Image Used

CLARITY CHARACTERISTICS



KEY TO SYMBOLS

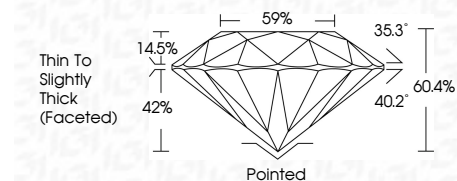
Red symbols indicate internal characteristics. Green symbols indicate external characteristics.

COLOR

D E F G H I J Faint Very Light Light

CLARITY

FL IF VVS 1-2 VS 1-2 SI 1-2 I 1-3 Flawless Internally Flawless Very Very Slightly Included Very Slightly Included Slightly Included Included



ADDITIONAL GRADING INFORMATION

Polish VERY GOOD Symmetry VERY GOOD Fluorescence NONE Inscription(s) LG793618217 Comments: As Grown - No indication of post-growth treatment. This Laboratory Grown Diamond was created by High Pressure High Temperature (HPHT) growth process. Type II



April 17, 2026 IGI Report No LG793618217 ROUND BRILLIANT 7.40 - 7.49 X 4.50 MM 1.54 CARAT F VVS 1 IDEAL 60.4% 59% Thin To Slightly Thick (Faceted) Pointed VERY GOOD VERY GOOD VERY GOOD NONE NONE LG793618217 Comments: As Grown - No indication of post-growth treatment. This Laboratory Grown Diamond was created by High Pressure High Temperature (HPHT) growth process. Type II