



INTERNATIONAL GEMOLOGICAL INSTITUTE

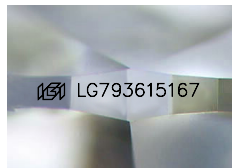
ELECTRONIC COPY



April 17, 2026
 IGI Report Number **LG793615167**
PEAR BRILLIANT
LABORATORY GROWN DIAMOND
7.65 X 4.76 X 2.95 MM
 Carat Weight **0.67 CARAT**
 Color Grade **F**
 Clarity Grade **VVS 2**
 Polish **EXCELLENT**
 Symmetry **EXCELLENT**
 Fluorescence **NONE**
 Inscription(s) **IGI LG793615167**

LABORATORY GROWN DIAMOND REPORT

April 17, 2026
 IGI Report Number **LG793615167**
 Description **LABORATORY GROWN DIAMOND**
 Shape and Cutting Style **PEAR BRILLIANT**
 Measurements **7.65 X 4.76 X 2.95 MM**



Sample Image Used

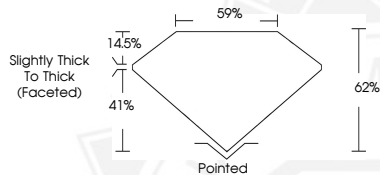
GRADING RESULTS

Carat Weight **0.67 CARAT**
 Color Grade **F**
 Clarity Grade **VVS 2**

ADDITIONAL GRADING INFORMATION

Polish **EXCELLENT**
 Symmetry **EXCELLENT**
 Fluorescence **NONE**
 Inscription(s) **IGI LG793615167**

Comments: This Laboratory Grown Diamond was created by
 Chemical Vapor Deposition (CVD) growth process.
 Type IIa



April 17, 2026
 IGI Report Number **LG793615167**
PEAR BRILLIANT
LABORATORY GROWN DIAMOND
7.65 X 4.76 X 2.95 MM
 Carat Weight **0.67 CARAT**
 Color Grade **F**
 Clarity Grade **VVS 2**
 Polish **EXCELLENT**
 Symmetry **EXCELLENT**
 Fluorescence **NONE**
 Inscription(s) **IGI LG793615167**

Comments: This Laboratory Grown
 Diamond was created by
 Chemical Vapor Deposition (CVD)
 growth process. Type IIa



THIS DOCUMENT WAS PRODUCED WITH THE FOLLOWING SECURITY MEASURES: SPECIAL DOCUMENT PAPER, INK SCREENS, WATERMARK, BACKGROUND DESIGNS, HOLOGRAM AND OTHER SECURITY FEATURES NOT LISTED AND DO EXCEED DOCUMENT SECURITY INDUSTRY GUIDELINES.

For terms & conditions and to verify this report, please visit www.igi.org