



ELECTRONIC COPY

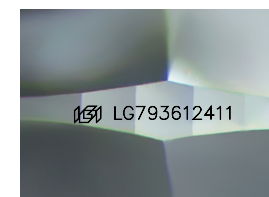
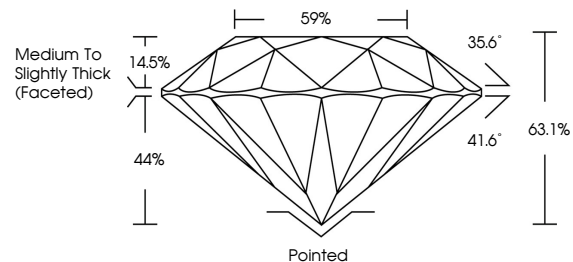
LG793612411 Report verification at igi.org



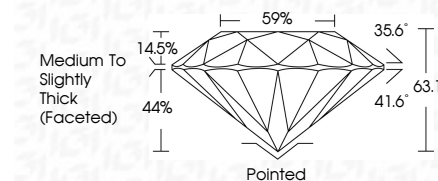
May 2, 2026 IGI Report Number LG793612411 Description LABORATORY GROWN DIAMOND Shape and Cutting Style ROUND BRILLIANT Measurements 6.31 - 6.37 X 4.00 MM GRADING RESULTS Carat Weight 1.00 CARAT Color Grade E Clarity Grade VS 1 Cut Grade EXCELLENT

May 2, 2026 IGI Report Number LG793612411 Description LABORATORY GROWN DIAMOND Shape and Cutting Style ROUND BRILLIANT Measurements 6.31 - 6.37 X 4.00 MM GRADING RESULTS Carat Weight 1.00 CARAT Color Grade E Clarity Grade VS 1 Cut Grade EXCELLENT

PROPORTIONS



Sample Image Used



ADDITIONAL GRADING INFORMATION

Polish EXCELLENT Symmetry EXCELLENT Fluorescence NONE Inscription(s) IGI LG793612411

Comments: This Laboratory Grown Diamond was created by Chemical Vapor Deposition (CVD) growth process. Type IIa

COLOR

D E F G H I J Faint Very Light Light

CLARITY

FL IF VS 1-2 VS 1-2 SI 1-2 I 1-3 Flawless Internally Flawless Very Very Slightly Included Very Slightly Included Slightly Included Included

ADDITIONAL GRADING INFORMATION

Polish EXCELLENT Symmetry EXCELLENT Fluorescence NONE Inscription(s) IGI LG793612411 Comments: This Laboratory Grown Diamond was created by Chemical Vapor Deposition (CVD) growth process. Type IIa



Summary of report details: May 2, 2026, IGI Report No LG793612411, ROUND BRILLIANT, 6.31 - 6.37 X 4.00 MM, 1.00 CARAT, E, VS 1, EXCELLENT, 63.1%, 35.6%, Medium To Slightly Thick (Faceted), Pointed, EXCELLENT, EXCELLENT, NONE, IGI LG793612411. Comments: This Laboratory Grown Diamond was created by Chemical Vapor Deposition (CVD) growth process. Type IIa