



ELECTRONIC COPY

LG793612018
Report verification at igi.org



April 24, 2026

IGI Report Number **LG793612018**

Description **LABORATORY GROWN DIAMOND**

Shape and Cutting Style **HEART MODIFIED BRILLIANT**

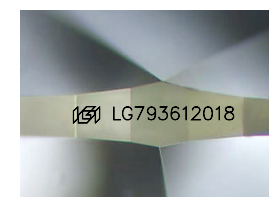
Measurements **10.17 X 10.53 X 5.67 MM**

GRADING RESULTS

Carat Weight **4.56 CARATS**

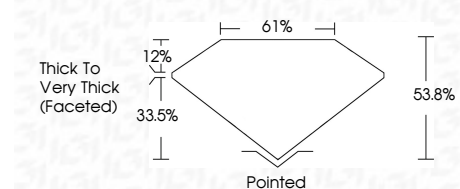
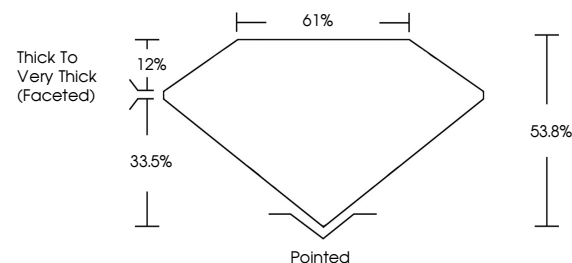
Color Grade **FANCY VIVID YELLOW**

Clarity Grade **VS 1**

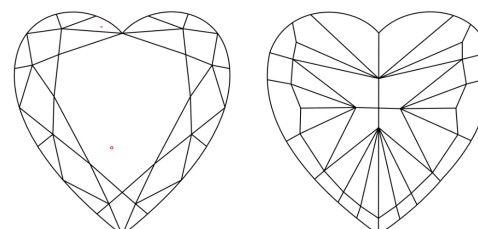


Sample Image Used

PROPORTIONS



CLARITY CHARACTERISTICS



KEY TO SYMBOLS

Red symbols indicate internal characteristics.
Green symbols indicate external characteristics.

COLOR

D E F G H I J Faint Very Light Light

CLARITY

FL	IF	VS ¹⁻²	VS ¹⁻²	SI ¹⁻²	I ¹⁻³
Flawless	Internally Flawless	Very Very Slightly Included	Very Slightly Included	Slightly Included	Included

ADDITIONAL GRADING INFORMATION

Polish **EXCELLENT**

Symmetry **EXCELLENT**

Fluorescence **NONE**

Inscription(s) **IGI LG793612018**

Comments: This Laboratory Grown Diamond was created by Chemical Vapor Deposition (CVD) growth process.



IGI



April 24, 2026
IGI Report No LG793612018
HEART MODIFIED BRILLIANT
10.17 X 10.53 X 5.67 MM
Carat Weight **4.56 CARATS**
Color Grade **FANCY VIVID YELLOW**
Clarity Grade **VS 1**
Depth **63.0%**
Table **61%**
Girdle **Thick to Very Thick (Faceted)**
Culet **Pointed**
Polish **EXCELLENT**
Symmetry **EXCELLENT**
Fluorescence **NONE**
Inscription(s) **IGI LG793612018**
Comments: This Laboratory Grown Diamond was created by Chemical Vapor Deposition (CVD) growth process.