



**ELECTRONIC COPY**

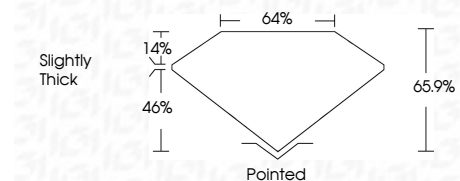
LG793604074  
Report verification at igi.org



April 20, 2026  
IGI Report Number **LG793604074**  
Description **LABORATORY GROWN DIAMOND**  
Shape and Cutting Style **MODIFIED LOZENGE STEP CUT**  
Measurements **11.55 X 6.65 X 4.38 MM**

**GRADING RESULTS**

Carat Weight **2.11 CARATS**  
Color Grade **E**  
Clarity Grade **VVS 2**



**ADDITIONAL GRADING INFORMATION**

Polish **EXCELLENT**  
Symmetry **EXCELLENT**  
Fluorescence **NONE**  
Inscription(s) **IGI LG793604074**  
Comments: This Laboratory Grown Diamond was created by Chemical Vapor Deposition (CVD) growth process. Type IIa



April 20, 2026  
IGI Report No LG793604074  
MODIFIED LOZENGE STEP CUT  
11.55 X 6.65 X 4.38 MM  
2.11 CARATS  
E  
VVS 2  
65.9%  
46%  
14%  
Slightly Thick  
Pointed  
EXCELLENT  
EXCELLENT  
NONE  
IGI LG793604074  
Comments: This Laboratory Grown Diamond was created by Chemical Vapor Deposition (CVD) growth process. Type IIa

April 20, 2026  
IGI Report Number **LG793604074**  
Description **LABORATORY GROWN DIAMOND**  
Shape and Cutting Style **MODIFIED LOZENGE STEP CUT**  
Measurements **11.55 X 6.65 X 4.38 MM**

**GRADING RESULTS**

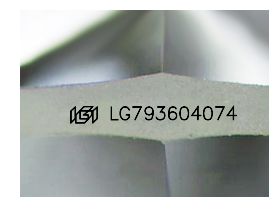
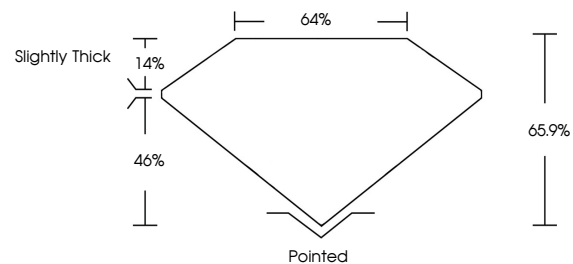
Carat Weight **2.11 CARATS**  
Color Grade **E**  
Clarity Grade **VVS 2**

**ADDITIONAL GRADING INFORMATION**

Polish **EXCELLENT**  
Symmetry **EXCELLENT**  
Fluorescence **NONE**  
Inscription(s) **IGI LG793604074**

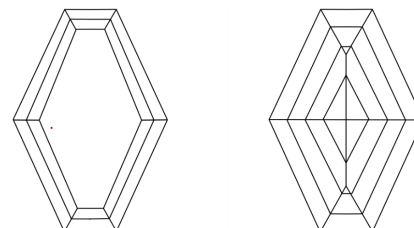
Comments: This Laboratory Grown Diamond was created by Chemical Vapor Deposition (CVD) growth process. Type IIa

**PROPORTIONS**



Sample Image Used

**CLARITY CHARACTERISTICS**



**KEY TO SYMBOLS**

Red symbols indicate internal characteristics.  
Green symbols indicate external characteristics.

**COLOR**

D E F G H I J Faint Very Light Light

**CLARITY**

FL	IF	VVS <sup>1-2</sup>	VS <sup>1-2</sup>	SI <sup>1-2</sup>	I <sup>1-3</sup>
Flawless	Internally Flawless	Very Very Slightly Included	Very Slightly Included	Slightly Included	Included

