

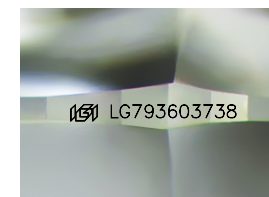


ELECTRONIC COPY

LG793603738
Report verification at igi.org

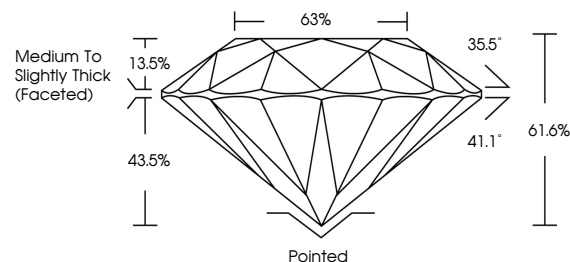


April 21, 2026
IGI Report Number **LG793603738**
Description **LABORATORY GROWN DIAMOND**
Shape and Cutting Style **ROUND BRILLIANT**
Measurements **9.32 - 9.36 X 5.75 MM**
GRADING RESULTS
Carat Weight **3.18 CARATS**
Color Grade **FANCY DEEP BROWN**
Clarity Grade **VS 2**
Cut Grade **EXCELLENT**

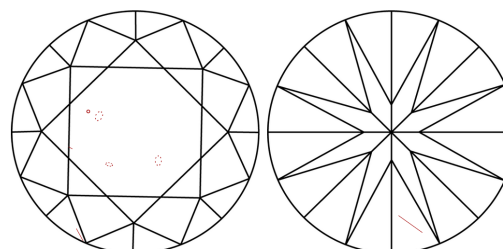


Sample Image Used

PROPORTIONS



CLARITY CHARACTERISTICS



KEY TO SYMBOLS

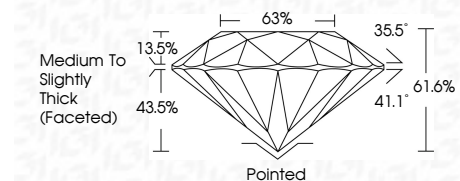
Red symbols indicate internal characteristics.
Green symbols indicate external characteristics.

COLOR

D E F G H I J Faint Very Light Light

CLARITY

FL	IF	VS ¹⁻²	VS ¹⁻²	SI ¹⁻²	I ¹⁻³
Flawless	Internally Flawless	Very Very Slightly Included	Very Slightly Included	Slightly Included	Included



ADDITIONAL GRADING INFORMATION

Polish **EXCELLENT**
Symmetry **VERY GOOD**
Fluorescence **NONE**
Inscription(s) **IGI LG793603738**
Comments: This Laboratory Grown Diamond was created by Chemical Vapor Deposition (CVD) growth process.



IGI



April 21, 2026
IGI Report No LG793603738
ROUND BRILLIANT
9.32 - 9.36 X 5.75 MM
3.18 CARATS
FANCY DEEP BROWN
VS 2
EXCELLENT
61.6%
68%
Medium To Slightly Thick (Faceted)
Pointed
EXCELLENT
VERY GOOD
NONE
IGI LG793603738
Comments: This Laboratory Grown Diamond was created by Chemical Vapor Deposition (CVD) growth process.