



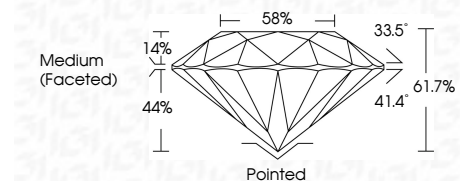
ELECTRONIC COPY

LG793602846 Report verification at igi.org



April 21, 2026 IGI Report Number LG793602846 Description LABORATORY GROWN DIAMOND Shape and Cutting Style ROUND BRILLIANT Measurements 7.33 - 7.40 X 4.54 MM

GRADING RESULTS Carat Weight 1.50 CARAT Color Grade D Clarity Grade VVS 1 Cut Grade IDEAL



ADDITIONAL GRADING INFORMATION Polish EXCELLENT Symmetry EXCELLENT Fluorescence NONE Inscription(s) LG793602846 Comments: As Grown - No indication of post-growth treatment. This Laboratory Grown Diamond was created by High Pressure High Temperature (HPHT) growth process. Type II



April 21, 2026 IGI Report No LG793602846 ROUND BRILLIANT 7.33 - 7.40 X 4.54 MM 1.50 CARAT D VVS 1 IDEAL 61.7% 58% Medium (Faceted) Pointed EXCELLENT EXCELLENT NONE LG793602846

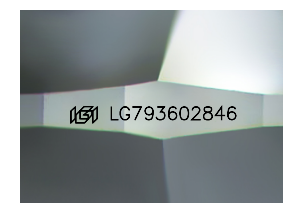
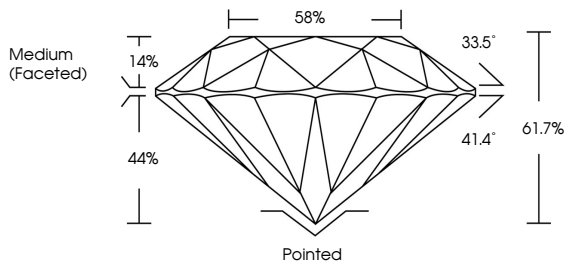
April 21, 2026 IGI Report Number LG793602846 Description LABORATORY GROWN DIAMOND Shape and Cutting Style ROUND BRILLIANT Measurements 7.33 - 7.40 X 4.54 MM

GRADING RESULTS Carat Weight 1.50 CARAT Color Grade D Clarity Grade VVS 1 Cut Grade IDEAL

ADDITIONAL GRADING INFORMATION Polish EXCELLENT Symmetry EXCELLENT Fluorescence NONE Inscription(s) LG793602846

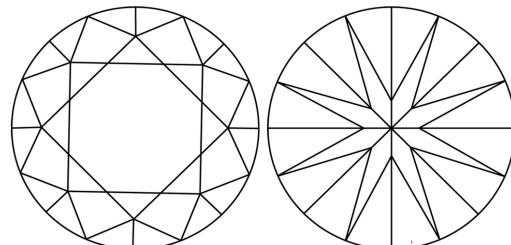
Comments: As Grown - No indication of post-growth treatment. This Laboratory Grown Diamond was created by High Pressure High Temperature (HPHT) growth process. Type II

PROPORTIONS



Sample Image Used

CLARITY CHARACTERISTICS



KEY TO SYMBOLS Red symbols indicate internal characteristics. Green symbols indicate external characteristics.

Color scale table with categories D, E, F, G, H, I, J, Faint, Very Light, Light

Clarity scale table with categories FL, IF, VVS 1-2, VS 1-2, SI 1-2, I 1-3

