



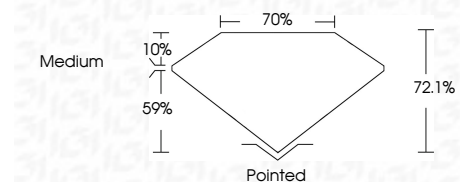
**ELECTRONIC COPY**

LG793602767  
Report verification at igi.org



April 22, 2026  
IGI Report Number **LG793602767**  
Description **LABORATORY GROWN DIAMOND**  
Shape and Cutting Style **PRINCESS CUT**  
Measurements **6.89 X 6.89 X 4.97 MM**

**GRADING RESULTS**  
Carat Weight **2.02 CARATS**  
Color Grade **D**  
Clarity Grade **VVS 1**

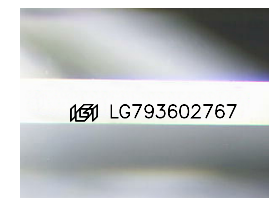


**ADDITIONAL GRADING INFORMATION**  
Polish **EXCELLENT**  
Symmetry **EXCELLENT**  
Fluorescence **NONE**  
Inscription(s) **IGI LG793602767**  
Comments: As Grown - No indication of post-growth treatment.  
This Laboratory Grown Diamond was created by High Pressure High Temperature (HPHT) growth process. Type II



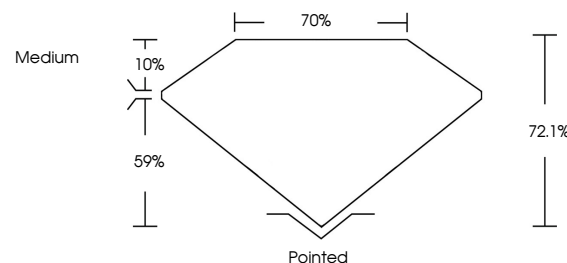
April 22, 2026  
IGI Report No. LG793602767  
**PRINCESS CUT**  
6.89 X 6.89 X 4.97 MM  
2.02 CARATS  
D  
VVS 1  
72.1%  
70%  
Medium  
Pointed  
EXCELLENT  
EXCELLENT  
NONE  
IGI LG793602767

Comments: As Grown - No indication of post-growth treatment.  
This Laboratory Grown Diamond was created by High Pressure High Temperature (HPHT) growth process. Type II

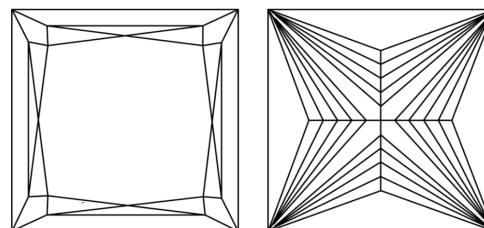


Sample Image Used

**PROPORTIONS**



**CLARITY CHARACTERISTICS**



**KEY TO SYMBOLS**

Red symbols indicate internal characteristics.  
Green symbols indicate external characteristics.

**COLOR**

D E F G H I J Faint Very Light Light

**CLARITY**

FL	IF	VVS <sup>1-2</sup>	VS <sup>1-2</sup>	SI <sup>1-2</sup>	I <sup>1-3</sup>
Flawless	Internally Flawless	Very Very Slightly Included	Very Slightly Included	Slightly Included	Included

