



ELECTRONIC COPY

LG793601672
Report verification at igi.org



April 27, 2026
IGI Report Number **LG793601672**
Description **LABORATORY GROWN DIAMOND**
Shape and Cutting Style **SQUARE CUSHION MODIFIED BRILLIANT**
Measurements **12.39 X 11.83 X 7.25 MM**
GRADING RESULTS
Carat Weight **10.04 CARATS**
Color Grade **FANCY VIVID YELLOW**
Clarity Grade **VS 2**

April 27, 2026
IGI Report Number **LG793601672**
Description **LABORATORY GROWN DIAMOND**
Shape and Cutting Style **SQUARE CUSHION MODIFIED BRILLIANT**
Measurements **12.39 X 11.83 X 7.25 MM**

GRADING RESULTS

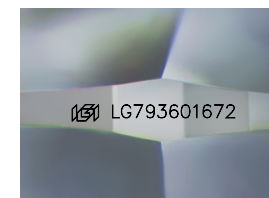
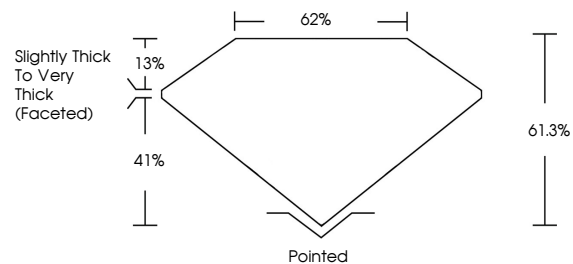
Carat Weight **10.04 CARATS**
Color Grade **FANCY VIVID YELLOW**
Clarity Grade **VS 2**

ADDITIONAL GRADING INFORMATION

Polish **EXCELLENT**
Symmetry **EXCELLENT**
Fluorescence **NONE**
Inscription(s) **IGI LG793601672**

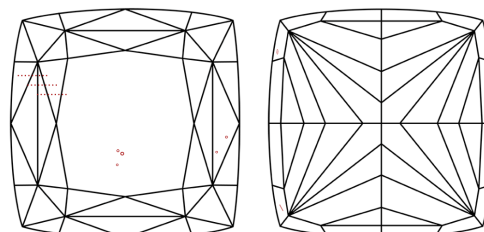
Comments: This Laboratory Grown Diamond was created by Chemical Vapor Deposition (CVD) growth process.

PROPORTIONS



Sample Image Used

CLARITY CHARACTERISTICS



KEY TO SYMBOLS

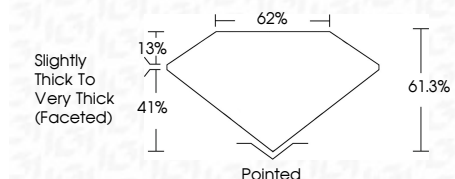
Red symbols indicate internal characteristics.
Green symbols indicate external characteristics.

COLOR

D E F G H I J Faint Very Light Light

CLARITY

FL	IF	VS ¹⁻²	VS ¹⁻²	SI ¹⁻²	I ¹⁻³
Flawless	Internally Flawless	Very Very Slightly Included	Very Slightly Included	Slightly Included	Included



ADDITIONAL GRADING INFORMATION

Polish **EXCELLENT**
Symmetry **EXCELLENT**
Fluorescence **NONE**
Inscription(s) **IGI LG793601672**
Comments: This Laboratory Grown Diamond was created by Chemical Vapor Deposition (CVD) growth process.



April 27, 2026
IGI Report No. LG793601672
SQUARE CUSHION MODIFIED BRILLIANT
12.39 X 11.83 X 7.25 MM
Carat Weight **10.04 CARATS**
Color Grade **FANCY VIVID YELLOW**
Clarity Grade **VS 2**
Table **61.6%**
Girdle **62%**
Slightly Thick To Very Thick (Faceted)
Culet **Pointed**
Polish **EXCELLENT**
Symmetry **EXCELLENT**
Fluorescence **NONE**
Inscription(s) **IGI LG793601672**
Comments: This Laboratory Grown Diamond was created by Chemical Vapor Deposition (CVD) growth process.