



**ELECTRONIC COPY**

LG793601643  
Report verification at igi.org



April 23, 2026

IGI Report Number **LG793601643**

Description **LABORATORY GROWN DIAMOND**

Shape and Cutting Style **SQUARE EMERALD CUT**

Measurements **8.01 X 7.97 X 5.24 MM**

**GRADING RESULTS**

Carat Weight **3.03 CARATS**

Color Grade **FANCY INTENSE PINK**

Clarity Grade **VS 1**

April 23, 2026  
IGI Report Number **LG793601643**  
Description **LABORATORY GROWN DIAMOND**  
Shape and Cutting Style **SQUARE EMERALD CUT**  
Measurements **8.01 X 7.97 X 5.24 MM**

**GRADING RESULTS**

Carat Weight **3.03 CARATS**

Color Grade **FANCY INTENSE PINK**

Clarity Grade **VS 1**

**ADDITIONAL GRADING INFORMATION**

Polish **EXCELLENT**

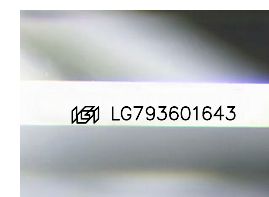
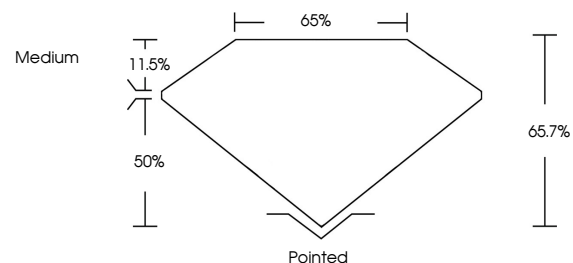
Symmetry **EXCELLENT**

Fluorescence **SLIGHT**

Inscription(s) **LG793601643**

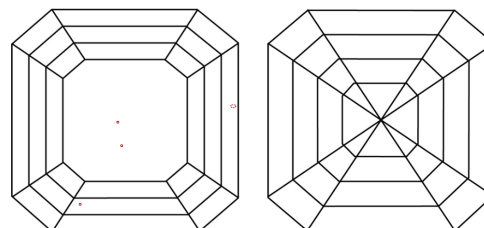
Comments: This Laboratory Grown Diamond was created by Chemical Vapor Deposition (CVD) growth process. Indications of post-growth treatment.

**PROPORTIONS**



Sample Image Used

**CLARITY CHARACTERISTICS**



**KEY TO SYMBOLS**

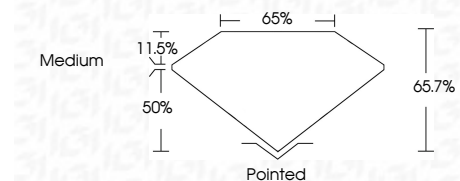
Red symbols indicate internal characteristics.  
Green symbols indicate external characteristics.

**COLOR**

D E F G H I J Faint Very Light Light

**CLARITY**

FL	IF	VS <sup>1-2</sup>	VS <sup>1-2</sup>	SI <sup>1-2</sup>	I <sup>1-3</sup>
Flawless	Internally Flawless	Very Very Slightly Included	Very Slightly Included	Slightly Included	Included



**ADDITIONAL GRADING INFORMATION**

Polish **EXCELLENT**

Symmetry **EXCELLENT**

Fluorescence **SLIGHT**

Inscription(s) **LG793601643**

Comments: This Laboratory Grown Diamond was created by Chemical Vapor Deposition (CVD) growth process. Indications of post-growth treatment.



**IGI**



April 23, 2026  
IGI Report No **LG793601643**  
**SQUARE EMERALD CUT**  
3.03 CARATS  
Carat Weight  
Color Grade **FANCY INTENSE PINK**  
Clarity Grade **VS 1**  
Depth **65.7%**  
Table **65%**  
Girdle **Medium**  
Culet **Pointed**  
Polish **EXCELLENT**  
Symmetry **EXCELLENT**  
Fluorescence **SLIGHT**  
Inscription(s) **LG793601643**  
Comments: This Laboratory Grown Diamond was created by Chemical Vapor Deposition (CVD) growth process. Indications of post-growth treatment.