



April 20, 2026

IGI Report Number **LG793601440**

**OVAL BRILLIANT
LABORATORY GROWN DIAMOND
7.59 X 5.16 X 3.16 MM**

Carat Weight **0.79 CARAT**
Color Grade **D**
Clarity Grade **VVS 1**
Polish **EXCELLENT**
Symmetry **EXCELLENT**
Fluorescence **NONE**
Inscription(s) **IGI LG793601440**

Comments: This Laboratory Grown Diamond was created by Chemical Vapor Deposition (CVD) growth process. Type IIa

LABORATORY GROWN DIAMOND REPORT

April 20, 2026
IGI Report Number **LG793601440**
Description **LABORATORY GROWN DIAMOND**
Shape and Cutting Style **OVAL BRILLIANT**
Measurements **7.59 X 5.16 X 3.16 MM**

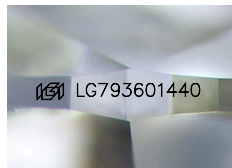
GRADING RESULTS

Carat Weight **0.79 CARAT**
Color Grade **D**
Clarity Grade **VVS 1**

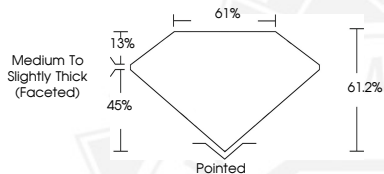
ADDITIONAL GRADING INFORMATION

Polish **EXCELLENT**
Symmetry **EXCELLENT**
Fluorescence **NONE**
Inscription(s) **IGI LG793601440**

Comments: This Laboratory Grown Diamond was created by Chemical Vapor Deposition (CVD) growth process. Type IIa



Sample Image Used



April 20, 2026

IGI Report Number **LG793601440**

**OVAL BRILLIANT
LABORATORY GROWN DIAMOND
7.59 X 5.16 X 3.16 MM**

Carat Weight **0.79 CARAT**
Color Grade **D**
Clarity Grade **VVS 1**
Polish **EXCELLENT**
Symmetry **EXCELLENT**
Fluorescence **NONE**
Inscription(s) **IGI LG793601440**

Comments: This Laboratory Grown Diamond was created by Chemical Vapor Deposition (CVD) growth process. Type IIa



THIS DOCUMENT WAS PRODUCED WITH THE FOLLOWING SECURITY MEASURES: SPECIAL DOCUMENT PAPER, INK SCREENS, WATERMARK, BACKGROUND DESIGNS, HOLOGRAM AND OTHER SECURITY FEATURES NOT LISTED AND DO EXCEED DOCUMENT SECURITY INDUSTRY GUIDELINES.