



**LABORATORY GROWN DIAMOND REPORT**

April 18, 2026  
 IGI Report Number **LG792699914**  
 Description **LABORATORY GROWN DIAMOND**  
 Shape and Cutting Style **PEAR BRILLIANT**  
 Measurements **8.70 X 5.60 X 3.43 MM**

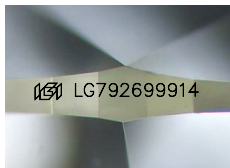
**GRADING RESULTS**

Carat Weight **0.98 CARAT**  
 Color Grade **E**  
 Clarity Grade **VVS 2**

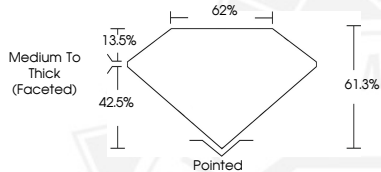
**ADDITIONAL GRADING INFORMATION**

Polish **EXCELLENT**  
 Symmetry **EXCELLENT**  
 Fluorescence **NONE**  
 Inscription(s) **IGI LG792699914**

Comments: This Laboratory Grown Diamond was created by Chemical Vapor Deposition (CVD) growth process. Type IIa



Sample Image Used



April 18, 2026  
 IGI Report Number **LG792699914**  
**PEAR BRILLIANT**  
**LABORATORY GROWN DIAMOND**  
**8.70 X 5.60 X 3.43 MM**  
 Carat Weight **0.98 CARAT**  
 Color Grade **E**  
 Clarity Grade **VVS 2**  
 Polish **EXCELLENT**  
 Symmetry **EXCELLENT**  
 Fluorescence **NONE**  
 Inscription(s) **IGI LG792699914**

Comments: This Laboratory Grown Diamond was created by Chemical Vapor Deposition (CVD) growth process. Type IIa



April 18, 2026  
 IGI Report Number **LG792699914**  
**PEAR BRILLIANT**  
**LABORATORY GROWN DIAMOND**  
**8.70 X 5.60 X 3.43 MM**  
 Carat Weight **0.98 CARAT**  
 Color Grade **E**  
 Clarity Grade **VVS 2**  
 Polish **EXCELLENT**  
 Symmetry **EXCELLENT**  
 Fluorescence **NONE**  
 Inscription(s) **IGI LG792699914**

Comments: This Laboratory Grown Diamond was created by Chemical Vapor Deposition (CVD) growth process. Type IIa



THIS DOCUMENT WAS PRODUCED WITH THE FOLLOWING SECURITY MEASURES: SPECIAL DOCUMENT PAPER, INK SCREENS, WATERMARK, BACKGROUND DESIGNS, HOLOGRAM AND OTHER SECURITY FEATURES NOT LISTED AND DO EXCEED DOCUMENT SECURITY INDUSTRY GUIDELINES.