



ELECTRONIC COPY

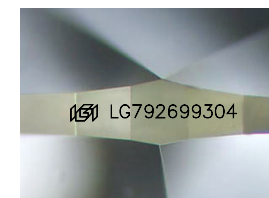
LG792699304
Report verification at igi.org



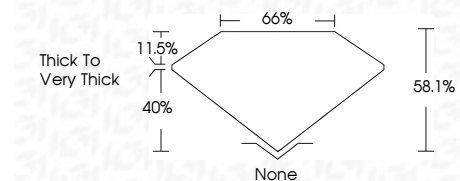
April 27, 2026
IGI Report Number **LG792699304**
Description **LABORATORY GROWN DIAMOND**
Shape and Cutting Style **OVAL POLYGON STEP CUT**
Measurements **13.46 X 8.73 X 5.07 MM**

GRADING RESULTS

Carat Weight **4.58 CARATS**
Color Grade **E**
Clarity Grade **VVS 2**



Sample Image Used



ADDITIONAL GRADING INFORMATION

Polish **EXCELLENT**
Symmetry **EXCELLENT**
Fluorescence **NONE**
Inscription(s) **IGI LG792699304**
Comments: This Laboratory Grown Diamond was created by Chemical Vapor Deposition (CVD) growth process. Type IIa



April 27, 2026
IGI Report No LG792699304
OVAL POLYGON STEP CUT
13.46 X 8.73 X 5.07 MM
4.58 CARATS
E
VVS 2
58.1%
65%
Thick to Very Thick
None
EXCELLENT
EXCELLENT
NONE
IGI LG792699304
Comments: This Laboratory Grown Diamond was created by Chemical Vapor Deposition (CVD) growth process. Type IIa

LABORATORY GROWN DIAMOND REPORT

April 27, 2026
IGI Report Number **LG792699304**
Description **LABORATORY GROWN DIAMOND**
Shape and Cutting Style **OVAL POLYGON STEP CUT**
Measurements **13.46 X 8.73 X 5.07 MM**

GRADING RESULTS

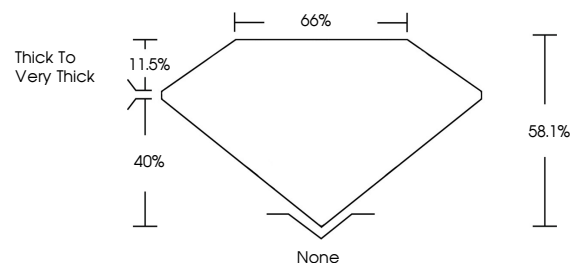
Carat Weight **4.58 CARATS**
Color Grade **E**
Clarity Grade **VVS 2**

ADDITIONAL GRADING INFORMATION

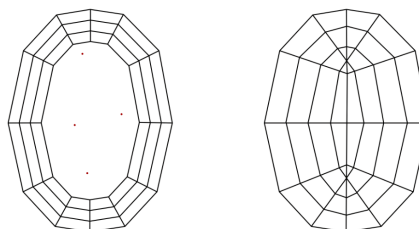
Polish **EXCELLENT**
Symmetry **EXCELLENT**
Fluorescence **NONE**
Inscription(s) **IGI LG792699304**

Comments: This Laboratory Grown Diamond was created by Chemical Vapor Deposition (CVD) growth process. Type IIa

PROPORTIONS



CLARITY CHARACTERISTICS



KEY TO SYMBOLS

Red symbols indicate internal characteristics.
Green symbols indicate external characteristics.

COLOR

D E F G H I J Faint Very Light Light

CLARITY

FL	IF	VVS ¹⁻²	VS ¹⁻²	SI ¹⁻²	I ¹⁻³
Flawless	Internally Flawless	Very Very Slightly Included	Very Slightly Included	Slightly Included	Included

