



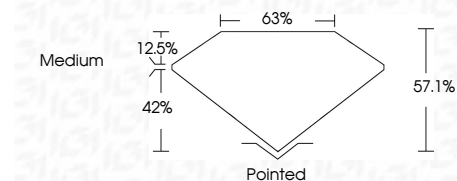
ELECTRONIC COPY

LG792698791
Report verification at igi.org



April 27, 2026
IGI Report Number **LG792698791**
Description **LABORATORY GROWN DIAMOND**
Shape and Cutting Style **HALF MOON MODIFIED
BRILLIANT**
Measurements **9.05 X 5.76 X 3.29 MM**

GRADING RESULTS
Carat Weight **1.10 CARAT**
Color Grade **E**
Clarity Grade **VS 1**



ADDITIONAL GRADING INFORMATION
Polish **EXCELLENT**
Symmetry **EXCELLENT**
Fluorescence **NONE**
Inscription(s) **IGI LG792698791**
Comments: This Laboratory Grown Diamond was created by Chemical Vapor Deposition (CVD) growth process. Type IIa



April 27, 2026
IGI Report No LG792698791
HALF MOON MODIFIED BRILLIANT
9.05 X 5.76 X 3.29 MM
1.10 CARAT
E
VS 1
57.1%
42%
63%
Medium
Pointed
EXCELLENT
EXCELLENT
NONE
IGI LG792698791
Comments: This Laboratory Grown Diamond was created by Chemical Vapor Deposition (CVD) growth process. Type IIa

LABORATORY GROWN DIAMOND REPORT

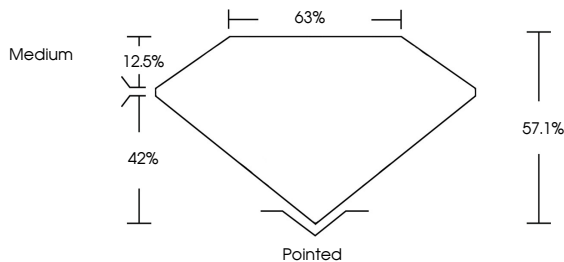
April 27, 2026
IGI Report Number **LG792698791**
Description **LABORATORY GROWN DIAMOND**
Shape and Cutting Style **HALF MOON MODIFIED
BRILLIANT**
Measurements **9.05 X 5.76 X 3.29 MM**

GRADING RESULTS
Carat Weight **1.10 CARAT**
Color Grade **E**
Clarity Grade **VS 1**

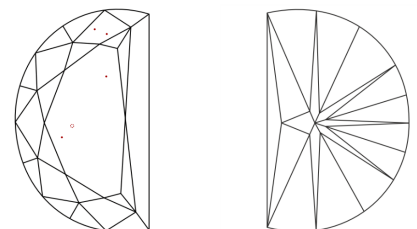
ADDITIONAL GRADING INFORMATION
Polish **EXCELLENT**
Symmetry **EXCELLENT**
Fluorescence **NONE**
Inscription(s) **IGI LG792698791**

Comments: This Laboratory Grown Diamond was created by Chemical Vapor Deposition (CVD) growth process. Type IIa

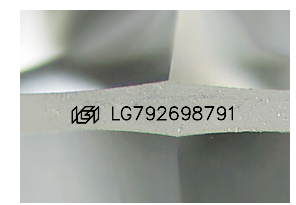
PROPORTIONS



CLARITY CHARACTERISTICS



KEY TO SYMBOLS
Red symbols indicate internal characteristics.
Green symbols indicate external characteristics.



Sample Image Used

COLOR

D E F G H I J Faint Very Light Light

CLARITY

FL	IF	VS ¹⁻²	VS ¹⁻²	SI ¹⁻²	I ¹⁻³
Flawless	Internally Flawless	Very Very Slightly Included	Very Slightly Included	Slightly Included	Included

