



**ELECTRONIC COPY**

LG792698193  
Report verification at igi.org



April 29, 2026  
IGI Report Number **LG792698193**  
Description **LABORATORY GROWN DIAMOND**  
Shape and Cutting Style **CUT CORNERED  
RECTANGULAR MODIFIED  
BRILLIANT**

Measurements **10.71 X 7.48 X 5.02 MM**

**GRADING RESULTS**

Carat Weight **3.53 CARATS**  
Color Grade **F**  
Clarity Grade **VS 1**

April 29, 2026  
IGI Report Number **LG792698193**  
Description **LABORATORY GROWN DIAMOND**  
Shape and Cutting Style **CUT CORNERED RECTANGULAR  
MODIFIED BRILLIANT**  
Measurements **10.71 X 7.48 X 5.02 MM**

**GRADING RESULTS**

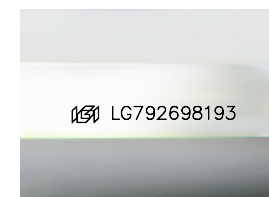
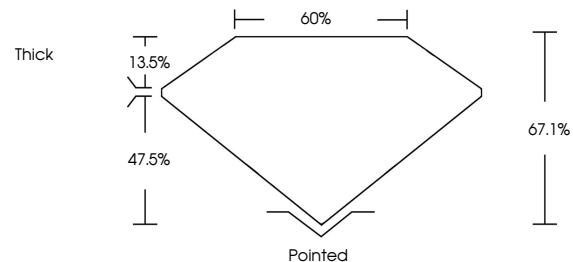
Carat Weight **3.53 CARATS**  
Color Grade **F**  
Clarity Grade **VS 1**

**ADDITIONAL GRADING INFORMATION**

Polish **EXCELLENT**  
Symmetry **EXCELLENT**  
Fluorescence **NONE**  
Inscription(s) **IGI LG792698193**

Comments: This Laboratory Grown Diamond was created by Chemical Vapor Deposition (CVD) growth process.  
Type IIa

**PROPORTIONS**



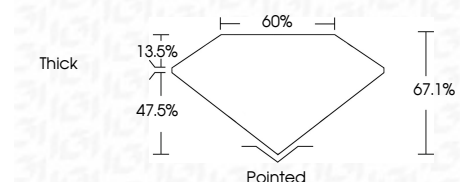
Sample Image Used

**COLOR**

D E F G H I J Faint Very Light Light

**CLARITY**

FL	IF	VS <sup>1-2</sup>	VS <sup>1-2</sup>	SI <sup>1-2</sup>	I <sup>1-3</sup>
Flawless	Internally Flawless	Very Very Slightly Included	Very Slightly Included	Slightly Included	Included



**ADDITIONAL GRADING INFORMATION**

Polish **EXCELLENT**  
Symmetry **EXCELLENT**  
Fluorescence **NONE**  
Inscription(s) **IGI LG792698193**  
Comments: This Laboratory Grown Diamond was created by Chemical Vapor Deposition (CVD) growth process.  
Type IIa



**IGI**



April 29, 2026  
IGI Report No. LG792698193  
CUT CORNERED RECT. MODIFIED BRILLIANT  
10.71 X 7.48 X 5.02 MM  
3.53 CARATS  
F  
VS 1  
67.1%  
60%  
Thick  
Pointed  
EXCELLENT  
EXCELLENT  
NONE  
IGI LG792698193

Comments: This Laboratory Grown Diamond was created by Chemical Vapor Deposition (CVD) growth process.  
Type IIa