



**LABORATORY GROWN DIAMOND REPORT**

April 17, 2026  
 IGI Report Number **LG792696262**  
 Description **LABORATORY GROWN DIAMOND**  
 Shape and Cutting Style **ROUND BRILLIANT**  
 Measurements **4.77 - 4.81 X 2.95 MM**

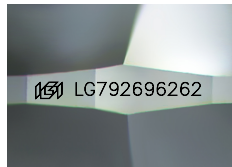
**GRADING RESULTS**

Carat Weight **0.41 CARAT**  
 Color Grade **D**  
 Clarity Grade **VVS 2**  
 Cut Grade **IDEAL**

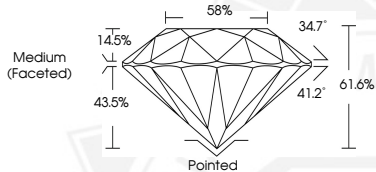
**ADDITIONAL GRADING INFORMATION**

Polish **EXCELLENT**  
 Symmetry **EXCELLENT**  
 Fluorescence **NONE**  
 Inscription(s) **IGI LG792696262**

Comments: This Laboratory Grown Diamond was created by Chemical Vapor Deposition (CVD) growth process. Type IIa



Sample Image Used



April 17, 2026  
 IGI Report Number **LG792696262**  
 ROUND BRILLIANT  
 LABORATORY GROWN DIAMOND  
 4.77 - 4.81 X 2.95 MM  
 0.41 CARAT  
 D  
 VVS 2  
 IDEAL  
 EXCELLENT  
 EXCELLENT  
 NONE  
 IGI LG792696262  
 Comments: This Laboratory Grown Diamond was created by Chemical Vapor Deposition (CVD) growth process. Type IIa



April 17, 2026  
 IGI Report Number **LG792696262**  
 ROUND BRILLIANT  
 LABORATORY GROWN DIAMOND  
 4.77 - 4.81 X 2.95 MM  
 0.41 CARAT  
 D  
 VVS 2  
 IDEAL  
 EXCELLENT  
 EXCELLENT  
 NONE  
 IGI LG792696262  
 Comments: This Laboratory Grown Diamond was created by Chemical Vapor Deposition (CVD) growth process. Type IIa



THIS DOCUMENT WAS PRODUCED WITH THE FOLLOWING SECURITY MEASURES: SPECIAL DOCUMENT PAPER, INK SCREENS, WATERMARK, BACKGROUND DESIGNS, HOLOGRAM AND OTHER SECURITY FEATURES NOT LISTED AND DO EXCEED DOCUMENT SECURITY INDUSTRY GUIDELINES.