



**ELECTRONIC COPY**

LG792694295  
Report verification at igi.org

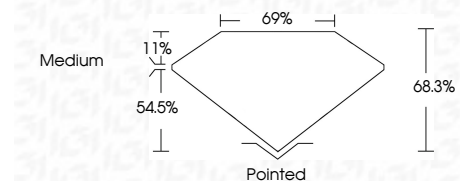


April 30, 2026  
IGI Report Number **LG792694295**  
Description **LABORATORY GROWN DIAMOND**

Shape and Cutting Style **PRINCESS CUT**  
Measurements **8.03 X 8.00 X 5.46 MM**

**GRADING RESULTS**

Carat Weight **3.05 CARATS**  
Color Grade **FANCY PINK**  
Clarity Grade **VVS 2**



**ADDITIONAL GRADING INFORMATION**

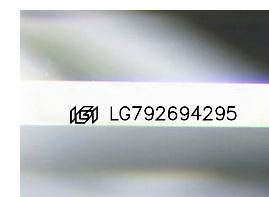
Polish **EXCELLENT**  
Symmetry **VERY GOOD**  
Fluorescence **SLIGHT**  
Inscription(s) **IGI LG792694295**

Comments: This Laboratory Grown Diamond was created by Chemical Vapor Deposition (CVD) growth process. Indications of post-growth treatment.



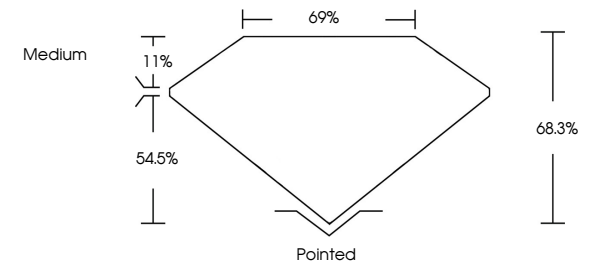
April 30, 2026  
IGI Report No **LG792694295**  
**PRINCESS CUT**  
**3.05 CARATS**  
Carat Weight **FANCY PINK**  
Color Grade **VVS 2**  
Depth **68.3%**  
Table **69%**  
Girdle **Medium**  
Culet **Pointed**  
Polish **EXCELLENT**  
Symmetry **VERY GOOD**  
Fluorescence **SLIGHT**  
Inscription(s) **IGI LG792694295**

Comments: This Laboratory Grown Diamond was created by Chemical Vapor Deposition (CVD) growth process. Indications of post-growth treatment.

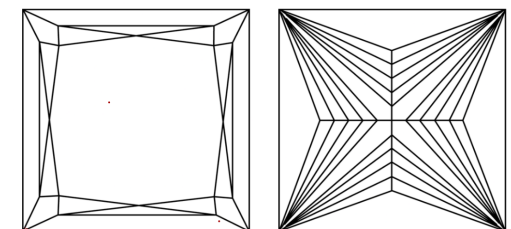


Sample Image Used

**PROPORTIONS**



**CLARITY CHARACTERISTICS**



**KEY TO SYMBOLS**

Red symbols indicate internal characteristics.  
Green symbols indicate external characteristics.

**COLOR**

D E F G H I J Faint Very Light Light

**CLARITY**

FL	IF	VVS <sup>1-2</sup>	VS <sup>1-2</sup>	SI <sup>1-2</sup>	I <sup>1-3</sup>
Flawless	Internally Flawless	Very Very Slightly Included	Very Slightly Included	Slightly Included	Included

