



ELECTRONIC COPY

LG792694293
Report verification at igi.org



April 30, 2026

IGI Report Number **LG792694293**

Description **LABORATORY GROWN DIAMOND**

Shape and Cutting Style **PRINCESS CUT**

Measurements **8.77 X 8.59 X 6.01 MM**

GRADING RESULTS

Carat Weight **4.00 CARATS**

Color Grade **FANCY INTENSE PINK**

Clarity Grade **VS 1**

April 30, 2026
IGI Report Number **LG792694293**
Description **LABORATORY GROWN DIAMOND**
Shape and Cutting Style **PRINCESS CUT**
Measurements **8.77 X 8.59 X 6.01 MM**

GRADING RESULTS

Carat Weight **4.00 CARATS**

Color Grade **FANCY INTENSE PINK**

Clarity Grade **VS 1**

ADDITIONAL GRADING INFORMATION

Polish **EXCELLENT**

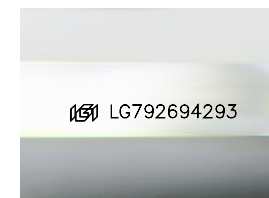
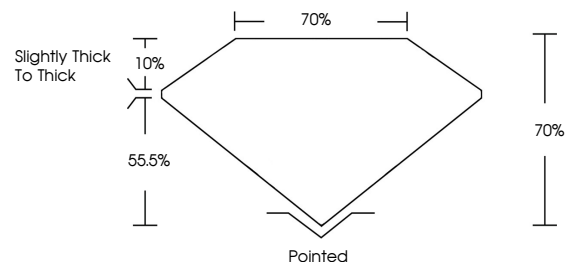
Symmetry **VERY GOOD**

Fluorescence **SLIGHT**

Inscription(s) **IGI LG792694293**

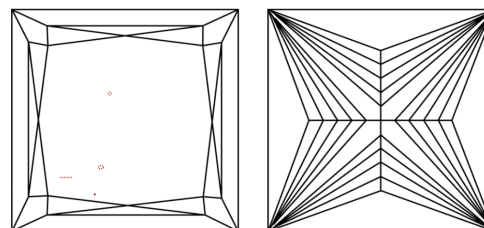
Comments: This Laboratory Grown Diamond was created by Chemical Vapor Deposition (CVD) growth process. Indications of post-growth treatment.

PROPORTIONS



Sample Image Used

CLARITY CHARACTERISTICS



KEY TO SYMBOLS

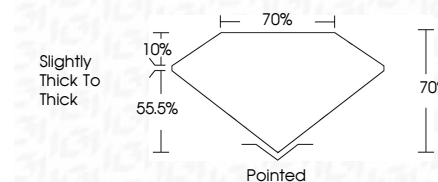
Red symbols indicate internal characteristics.
Green symbols indicate external characteristics.

COLOR

D E F G H I J Faint Very Light Light

CLARITY

FL	IF	VS ¹⁻²	VS ¹⁻²	SI ¹⁻²	I ¹⁻³
Flawless	Internally Flawless	Very Very Slightly Included	Very Slightly Included	Slightly Included	Included



ADDITIONAL GRADING INFORMATION

Polish **EXCELLENT**

Symmetry **VERY GOOD**

Fluorescence **SLIGHT**

Inscription(s) **IGI LG792694293**

Comments: This Laboratory Grown Diamond was created by Chemical Vapor Deposition (CVD) growth process. Indications of post-growth treatment.



IGI



April 30, 2026
IGI Report No **LG792694293**
PRINCESS CUT
4.00 CARATS
Carat Weight
FANCY INTENSE PINK
Color Grade
VS 1
Clarity Grade
Depth **70%**
Table **70%**
Girdle **Slightly thick to Thick**
Culet **Pointed**
Polish **EXCELLENT**
Symmetry **VERY GOOD**
Fluorescence **SLIGHT**
Inscription(s) **IGI LG792694293**
Comments: This Laboratory Grown Diamond was created by Chemical Vapor Deposition (CVD) growth process. Indications of post-growth treatment.