



ELECTRONIC COPY

LG792694246
Report verification at igi.org



April 29, 2026

IGI Report Number **LG792694246**

Description **LABORATORY GROWN DIAMOND**

Shape and Cutting Style **OVAL BRILLIANT**

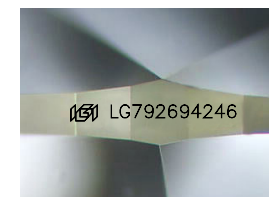
Measurements **8.16 X 5.40 X 3.36 MM**

GRADING RESULTS

Carat Weight **1.00 CARAT**

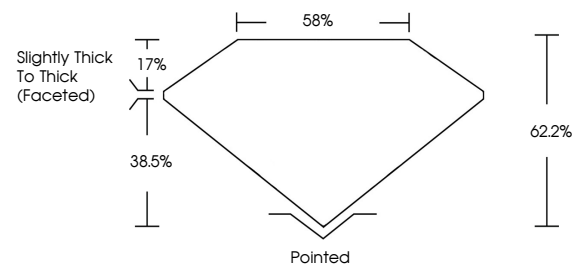
Color Grade **FANCY VIVID GREEN**

Clarity Grade **VVS 2**

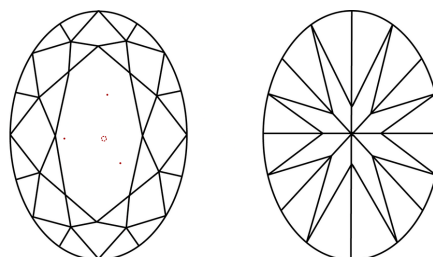


Sample Image Used

PROPORTIONS



CLARITY CHARACTERISTICS



KEY TO SYMBOLS

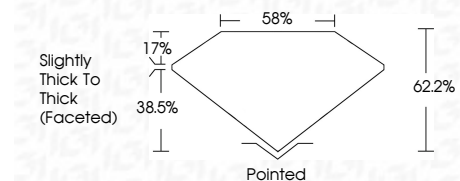
Red symbols indicate internal characteristics.
Green symbols indicate external characteristics.

COLOR

D E F G H I J Faint Very Light Light

CLARITY

FL	IF	VVS ¹⁻²	VS ¹⁻²	SI ¹⁻²	I ¹⁻³
Flawless	Internally Flawless	Very Very Slightly Included	Very Slightly Included	Slightly Included	Included



ADDITIONAL GRADING INFORMATION

Polish **EXCELLENT**

Symmetry **EXCELLENT**

Fluorescence **NONE**

Inscription(s) **IGI LG792694246**

Comments: This Laboratory Grown Diamond was created by Chemical Vapor Deposition (CVD) growth process.



IGI



April 29, 2026
IGI Report No LG792694246
OVAL BRILLIANT
8.16 X 5.40 X 3.36 MM
1.00 CARAT
FANCY VIVID GREEN
VVS 2
62.2%
38.5%
Slightly Thick To Thick (Faceted)
Pointed
EXCELLENT
EXCELLENT
NONE
IGI LG792694246

Comments: This Laboratory Grown Diamond was created by Chemical Vapor Deposition (CVD) growth process.