



ELECTRONIC COPY

LG792694244
Report verification at igi.org



April 29, 2026

IGI Report Number **LG792694244**

Description **LABORATORY GROWN DIAMOND**

Shape and Cutting Style **EMERALD CUT**

Measurements **6.81 X 4.92 X 3.55 MM**

GRADING RESULTS

Carat Weight **1.17 CARAT**

Color Grade **FANCY INTENSE PINK**

Clarity Grade **VVS 2**

April 29, 2026

IGI Report Number **LG792694244**

Description **LABORATORY GROWN DIAMOND**

Shape and Cutting Style **EMERALD CUT**

Measurements **6.81 X 4.92 X 3.55 MM**

GRADING RESULTS

Carat Weight **1.17 CARAT**

Color Grade **FANCY INTENSE PINK**

Clarity Grade **VVS 2**

ADDITIONAL GRADING INFORMATION

Polish **EXCELLENT**

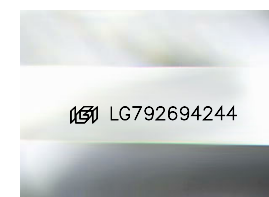
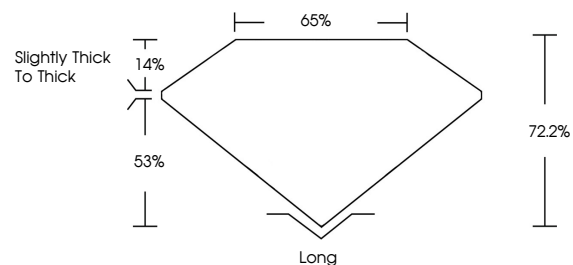
Symmetry **EXCELLENT**

Fluorescence **SLIGHT**

Inscription(s) **IGI LG792694244**

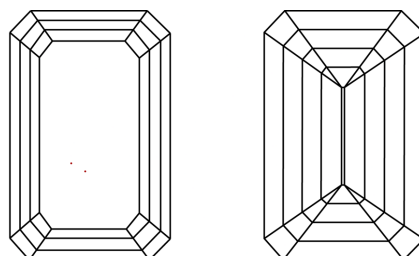
Comments: This Laboratory Grown Diamond was created by Chemical Vapor Deposition (CVD) growth process.

PROPORTIONS



Sample Image Used

CLARITY CHARACTERISTICS



KEY TO SYMBOLS

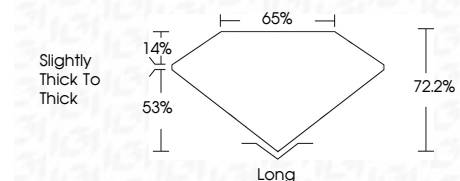
Red symbols indicate internal characteristics.
Green symbols indicate external characteristics.

COLOR

D E F G H I J Faint Very Light Light

CLARITY

FL	IF	VVS ¹⁻²	VS ¹⁻²	SI ¹⁻²	I ¹⁻³
Flawless	Internally Flawless	Very Very Slightly Included	Very Slightly Included	Slightly Included	Included



ADDITIONAL GRADING INFORMATION

Polish **EXCELLENT**

Symmetry **EXCELLENT**

Fluorescence **SLIGHT**

Inscription(s) **IGI LG792694244**

Comments: This Laboratory Grown Diamond was created by Chemical Vapor Deposition (CVD) growth process.



IGI



April 29, 2026
IGI Report No. LG792694244
EMERALD CUT
6.81 X 4.92 X 3.55 MM
1.17 CARAT
FANCY INTENSE PINK
Color Grade
Clarity Grade **VVS 2**
Depth **72.2%**
Table **65%**
Girdle **Slightly thick to thick**
Culet **Long**
Polish **EXCELLENT**
Symmetry **EXCELLENT**
Fluorescence **SLIGHT**
Inscription(s) **IGI LG792694244**

Comments: This Laboratory Grown Diamond was created by Chemical Vapor Deposition (CVD) growth process.