



ELECTRONIC COPY

LG792694074
Report verification at igi.org



April 28, 2026

IGI Report Number **LG792694074**

Description **LABORATORY GROWN DIAMOND**

Shape and Cutting Style **PEAR BRILLIANT**

Measurements **13.42 X 8.04 X 4.95 MM**

GRADING RESULTS

Carat Weight **3.00 CARATS**

Color Grade **FANCY VIVID BLUE**

Clarity Grade **SI 2**

April 28, 2026
IGI Report Number **LG792694074**
Description **LABORATORY GROWN DIAMOND**
Shape and Cutting Style **PEAR BRILLIANT**
Measurements **13.42 X 8.04 X 4.95 MM**

GRADING RESULTS

Carat Weight **3.00 CARATS**

Color Grade **FANCY VIVID BLUE**

Clarity Grade **SI 2**

ADDITIONAL GRADING INFORMATION

Polish **EXCELLENT**

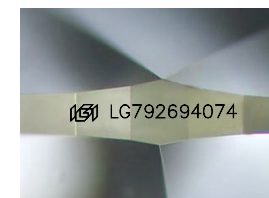
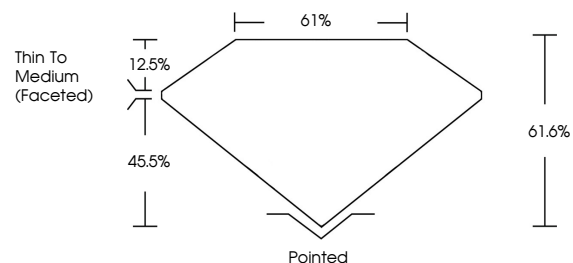
Symmetry **EXCELLENT**

Fluorescence **NONE**

Inscription(s) **IGI LG792694074**

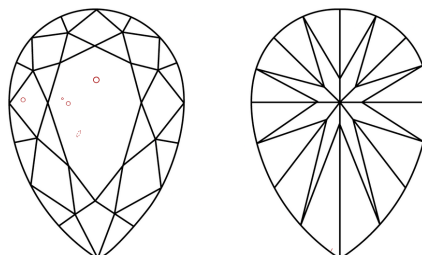
Comments: This Laboratory Grown Diamond was created by Chemical Vapor Deposition (CVD) growth process.
Indications of post-growth treatment.

PROPORTIONS



Sample Image Used

CLARITY CHARACTERISTICS



KEY TO SYMBOLS

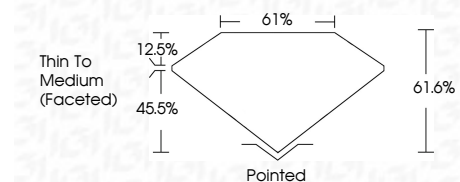
Red symbols indicate internal characteristics.
Green symbols indicate external characteristics.

COLOR

D E F G H I J Faint Very Light Light

CLARITY

FL	IF	VS ¹⁻²	VS ¹⁻²	SI ¹⁻²	I ¹⁻³
Flawless	Internally Flawless	Very Very Slightly Included	Very Slightly Included	Slightly Included	Included



ADDITIONAL GRADING INFORMATION

Polish **EXCELLENT**

Symmetry **EXCELLENT**

Fluorescence **NONE**

Inscription(s) **IGI LG792694074**

Comments: This Laboratory Grown Diamond was created by Chemical Vapor Deposition (CVD) growth process.
Indications of post-growth treatment.



IGI



April 28, 2026
IGI Report No LG792694074
PEAR BRILLIANT
3.00 CARATS
Carat Weight
Color Grade FANCY VIVID BLUE
Clarity Grade SI 2
Depth 61.6%
Table 61%
Girdle Thin To Medium (Faceted)
Culet Pointed
Polish EXCELLENT
Symmetry EXCELLENT
Fluorescence NONE
Inscription(s) IGI LG792694074
Comments: This Laboratory Grown Diamond was created by Chemical Vapor Deposition (CVD) growth process.
Indications of post-growth treatment.