



**ELECTRONIC COPY**

LG792694058  
Report verification at igi.org



April 29, 2026  
IGI Report Number **LG792694058**  
Description **LABORATORY GROWN DIAMOND**  
Shape and Cutting Style **HEART BRILLIANT**  
Measurements **7.66 X 8.77 X 5.23 MM**  
**GRADING RESULTS**  
Carat Weight **2.07 CARATS**  
Color Grade **FANCY VIVID GREEN**  
Clarity Grade **VVS 2**

April 29, 2026  
IGI Report Number **LG792694058**  
Description **LABORATORY GROWN DIAMOND**  
Shape and Cutting Style **HEART BRILLIANT**  
Measurements **7.66 X 8.77 X 5.23 MM**

**GRADING RESULTS**

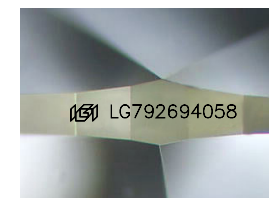
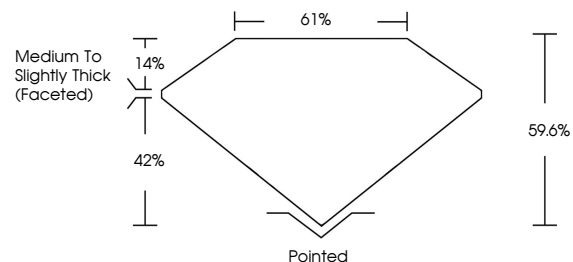
Carat Weight **2.07 CARATS**  
Color Grade **FANCY VIVID GREEN**  
Clarity Grade **VVS 2**

**ADDITIONAL GRADING INFORMATION**

Polish **EXCELLENT**  
Symmetry **EXCELLENT**  
Fluorescence **NONE**  
Inscription(s) **IGI LG792694058**

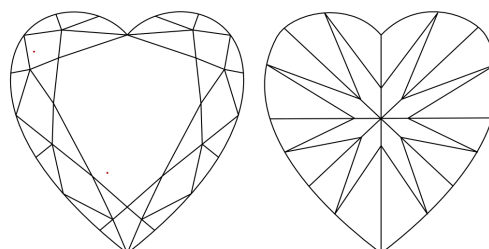
Comments: This Laboratory Grown Diamond was created by Chemical Vapor Deposition (CVD) growth process.  
Indications of post-growth treatment.

**PROPORTIONS**



Sample Image Used

**CLARITY CHARACTERISTICS**



**KEY TO SYMBOLS**

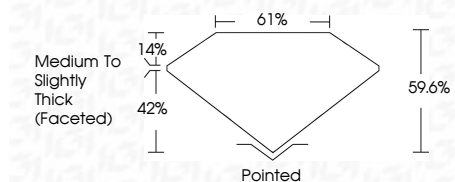
Red symbols indicate internal characteristics.  
Green symbols indicate external characteristics.

**COLOR**

D E F G H I J Faint Very Light Light

**CLARITY**

FL	IF	VVS <sup>1-2</sup>	VS <sup>1-2</sup>	SI <sup>1-2</sup>	I <sup>1-3</sup>
Flawless	Internally Flawless	Very Very Slightly Included	Very Slightly Included	Slightly Included	Included



**ADDITIONAL GRADING INFORMATION**

Polish **EXCELLENT**  
Symmetry **EXCELLENT**  
Fluorescence **NONE**  
Inscription(s) **IGI LG792694058**  
Comments: This Laboratory Grown Diamond was created by Chemical Vapor Deposition (CVD) growth process.  
Indications of post-growth treatment.



April 29, 2026  
IGI Report No **LG792694058**  
**HEART BRILLIANT**  
**2.07 CARATS**  
Carat Weight **FANCY VIVID GREEN**  
Color Grade **VVS 2**  
Depth **59.6%**  
Table **61%**  
Girdle **Medium to Slightly Thick (Faceted)**  
Culet **Pointed**  
Polish **EXCELLENT**  
Symmetry **EXCELLENT**  
Fluorescence **NONE**  
Inscription(s) **IGI LG792694058**  
Comments: This Laboratory Grown Diamond was created by Chemical Vapor Deposition (CVD) growth process.  
Indications of post-growth treatment.