



ELECTRONIC COPY

LG792693808
Report verification at igi.org



April 25, 2026

IGI Report Number **LG792693808**

Description **LABORATORY GROWN DIAMOND**

Shape and Cutting Style **CUT CORNERED
RECTANGULAR MODIFIED
BRILLIANT**

Measurements **12.03 X 8.44 X 5.59 MM**

GRADING RESULTS

Carat Weight **4.97 CARATS**

Color Grade **FANCY VIVID GREEN**

Clarity Grade **VS 1**

LABORATORY GROWN DIAMOND REPORT

April 25, 2026

IGI Report Number **LG792693808**

Description **LABORATORY GROWN DIAMOND**

Shape and Cutting Style **CUT CORNERED RECTANGULAR
MODIFIED BRILLIANT**

Measurements **12.03 X 8.44 X 5.59 MM**

GRADING RESULTS

Carat Weight **4.97 CARATS**

Color Grade **FANCY VIVID GREEN**

Clarity Grade **VS 1**

ADDITIONAL GRADING INFORMATION

Polish **EXCELLENT**

Symmetry **EXCELLENT**

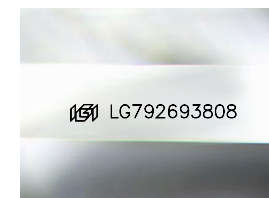
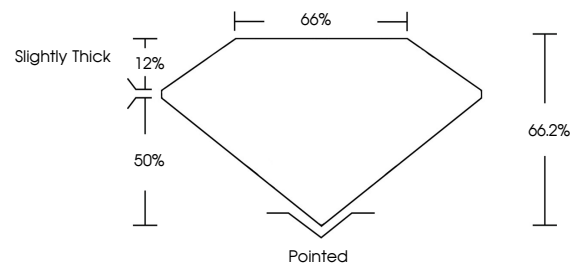
Fluorescence **NONE**

Inscription(s) **IGI LG792693808**

Comments: This Laboratory Grown Diamond was created by Chemical Vapor Deposition (CVD) growth process.

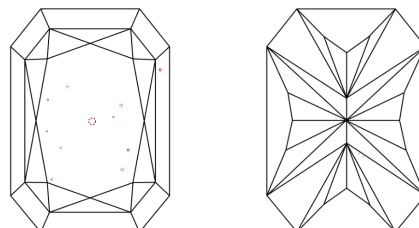
Indications of post-growth treatment.

PROPORTIONS



Sample Image Used

CLARITY CHARACTERISTICS



KEY TO SYMBOLS

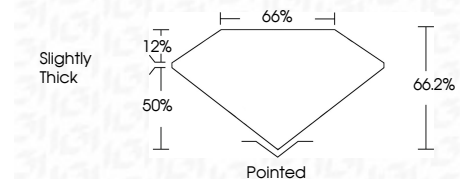
Red symbols indicate internal characteristics.
Green symbols indicate external characteristics.

COLOR

D E F G H I J Faint Very Light Light

CLARITY

FL	IF	VS ¹⁻²	VS ¹⁻²	SI ¹⁻²	I ¹⁻³
Flawless	Internally Flawless	Very Very Slightly Included	Very Slightly Included	Slightly Included	Included



ADDITIONAL GRADING INFORMATION

Polish **EXCELLENT**

Symmetry **EXCELLENT**

Fluorescence **NONE**

Inscription(s) **IGI LG792693808**

Comments: This Laboratory Grown Diamond was created by Chemical Vapor Deposition (CVD) growth process. Indications of post-growth treatment.



April 25, 2026
IGI Report No LG792693808
CUT CORNERED RECT. MODIFIED BRILLIANT

12.03 X 8.44 X 5.59 MM
4.97 CARATS
FANCY VIVID GREEN
VS 1
66.2%
50%
Slightly Thick

Pointed
EXCELLENT
EXCELLENT
NONE
IGI LG792693808

Comments: This Laboratory Grown Diamond was created by Chemical Vapor Deposition (CVD) growth process. Indications of post-growth treatment.