



ELECTRONIC COPY

LABORATORY GROWN DIAMOND REPORT

April 24, 2026  
IGI Report Number LG792693789  
Description LABORATORY GROWN DIAMOND  
Shape and Cutting Style CUT CORNERED RECTANGULAR MODIFIED BRILLIANT  
Measurements 8.22 X 5.51 X 3.56 MM

GRADING RESULTS

Carat Weight 1.51 CARAT  
Color Grade F  
Clarity Grade VS 2

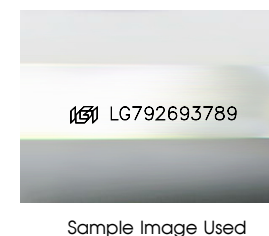
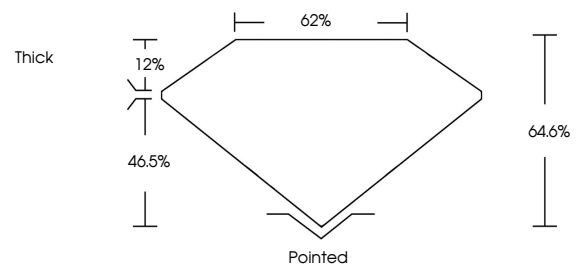
ADDITIONAL GRADING INFORMATION

Polish EXCELLENT  
Symmetry EXCELLENT  
Fluorescence NONE

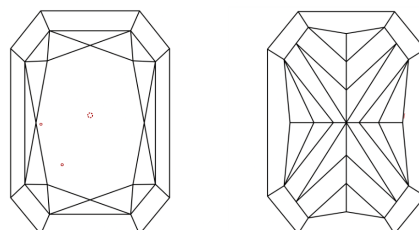
Inscription(s) IGI LG792693789

Comments: This Laboratory Grown Diamond was created by Chemical Vapor Deposition (CVD) growth process.  
Type IIa

PROPORTIONS



CLARITY CHARACTERISTICS



KEY TO SYMBOLS

Red symbols indicate internal characteristics.  
Green symbols indicate external characteristics.

COLOR

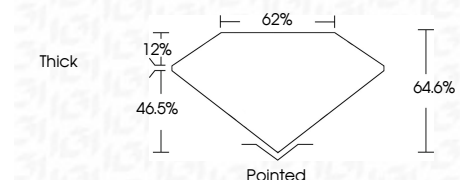
D E F G H I J Faint Very Light Light

CLARITY

FL IF VS<sup>1-2</sup> VS<sup>1-2</sup> SI<sup>1-2</sup> I<sup>1-3</sup>  
Flawless Internally Flawless Very Very Slightly Included Very Slightly Included Slightly Included Included



April 24, 2026  
IGI Report Number LG792693789  
Description LABORATORY GROWN DIAMOND  
Shape and Cutting Style CUT CORNERED RECTANGULAR MODIFIED BRILLIANT  
Measurements 8.22 X 5.51 X 3.56 MM  
GRADING RESULTS  
Carat Weight 1.51 CARAT  
Color Grade F  
Clarity Grade VS 2



ADDITIONAL GRADING INFORMATION

Polish EXCELLENT  
Symmetry EXCELLENT  
Fluorescence NONE  
Inscription(s) IGI LG792693789  
Comments: This Laboratory Grown Diamond was created by Chemical Vapor Deposition (CVD) growth process.  
Type IIa



April 24, 2026  
IGI Report No LG792693789  
CUT CORNERED RECT. MODIFIED BRILLIANT  
8.22 X 5.51 X 3.56 MM  
1.51 CARAT  
F  
VS 2  
64.6%  
62%  
Thick  
Pointed  
EXCELLENT  
EXCELLENT  
NONE  
IGI LG792693789  
Comments: This Laboratory Grown Diamond was created by Chemical Vapor Deposition (CVD) growth process.  
Type IIa