



ELECTRONIC COPY

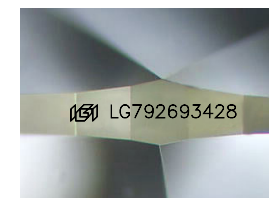
LG792693428
Report verification at igi.org



April 27, 2026
IGI Report Number **LG792693428**
Description **LABORATORY GROWN DIAMOND**

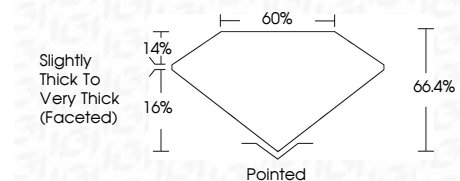
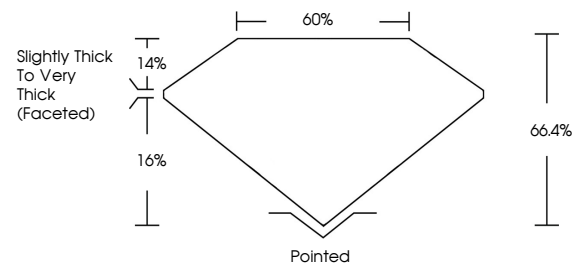
Shape and Cutting Style **PEAR MODIFIED BRILLIANT**
Measurements **15.04 X 9.71 X 6.45 MM**

GRADING RESULTS
Carat Weight **7.06 CARATS**
Color Grade **FANCY VIVID YELLOW**
Clarity Grade **VS 1**

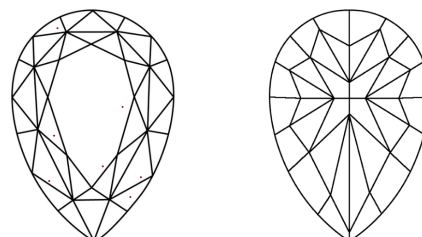


Sample Image Used

PROPORTIONS



CLARITY CHARACTERISTICS



KEY TO SYMBOLS

Red symbols indicate internal characteristics.
Green symbols indicate external characteristics.

COLOR

D E F G H I J Faint Very Light Light

CLARITY

FL	IF	VS ¹⁻²	VS ¹⁻²	SI ¹⁻²	I ¹⁻³
Flawless	Internally Flawless	Very Very Slightly Included	Very Slightly Included	Slightly Included	Included

ADDITIONAL GRADING INFORMATION

Polish **EXCELLENT**
Symmetry **EXCELLENT**
Fluorescence **NONE**
Inscription(s) **(IGI) LG792693428**
Comments: This Laboratory Grown Diamond was created by Chemical Vapor Deposition (CVD) growth process.



IGI



April 27, 2026
IGI Report No LG792693428
PEAR MODIFIED BRILLIANT
15.04 X 9.71 X 6.45 MM
7.06 CARATS
FANCY VIVID YELLOW
VS 1
66.4%
60%
Slightly Thick To Very Thick (Faceted)
Pointed
EXCELLENT
EXCELLENT
NONE
(IGI) LG792693428

Comments: This Laboratory Grown Diamond was created by Chemical Vapor Deposition (CVD) growth process.