



**ELECTRONIC COPY**

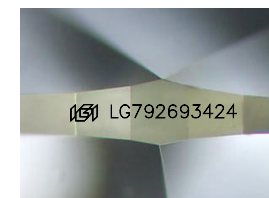
LG792693424  
Report verification at [igi.org](http://igi.org)



April 27, 2026  
IGI Report Number **LG792693424**  
Description **LABORATORY GROWN DIAMOND**

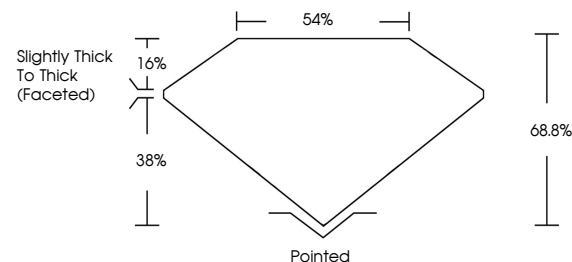
Shape and Cutting Style **PEAR MODIFIED BRILLIANT**  
Measurements **11.60 X 7.17 X 4.93 MM**

**GRADING RESULTS**  
Carat Weight **3.04 CARATS**  
Color Grade **FANCY VIVID YELLOW**  
Clarity Grade **VVS 2**

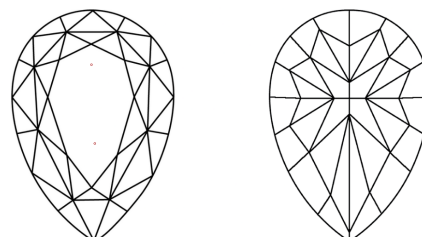


Sample Image Used

**PROPORTIONS**



**CLARITY CHARACTERISTICS**



**KEY TO SYMBOLS**

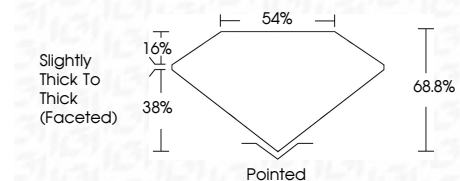
Red symbols indicate internal characteristics.  
Green symbols indicate external characteristics.

**COLOR**

D E F G H I J Faint Very Light Light

**CLARITY**

FL	IF	VVS <sup>1-2</sup>	VS <sup>1-2</sup>	SI <sup>1-2</sup>	I <sup>1-3</sup>
Flawless	Internally Flawless	Very Very Slightly Included	Very Slightly Included	Slightly Included	Included



**ADDITIONAL GRADING INFORMATION**

Polish **EXCELLENT**  
Symmetry **EXCELLENT**  
Fluorescence **NONE**  
Inscription(s) **IGI LG792693424**  
Comments: This Laboratory Grown Diamond was created by Chemical Vapor Deposition (CVD) growth process.



**IGI**



April 27, 2026  
IGI Report No **LG792693424**  
**PEAR MODIFIED BRILLIANT**  
11.60 X 7.17 X 4.93 MM  
3.04 CARATS  
FANCY VIVID YELLOW  
VVS 2  
68.8%  
54%  
Slightly Thick To Thick (Faceted)  
Pointed  
EXCELLENT  
EXCELLENT  
NONE  
IGI LG792693424  
Comments: This Laboratory Grown Diamond was created by Chemical Vapor Deposition (CVD) growth process.