



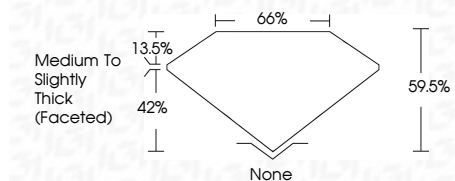
ELECTRONIC COPY

LG792692651
Report verification at igi.org



April 29, 2026
IGI Report Number **LG792692651**
Description **LABORATORY GROWN DIAMOND**
Shape and Cutting Style **ROUND MODIFIED BRILLIANT**
Measurements **7.16 - 7.19 X 4.28 MM**

GRADING RESULTS
Carat Weight **1.50 CARAT**
Color Grade **F**
Clarity Grade **VS 1**



ADDITIONAL GRADING INFORMATION
Polish **EXCELLENT**
Symmetry **EXCELLENT**
Fluorescence **NONE**
Inscription(s) **(IGI) LG792692651**
Comments: This Laboratory Grown Diamond was created by Chemical Vapor Deposition (CVD) growth process. Type IIa



April 29, 2026
IGI Report No. LG792692651
ROUND MODIFIED BRILLIANT
7.16 - 7.19 X 4.28 MM
1.50 CARAT
F
VS 1
66%
42%
59.5%
None
EXCELLENT
EXCELLENT
NONE
(IGI) LG792692651
None
EXCELLENT
EXCELLENT
NONE
(IGI) LG792692651
Comments: This Laboratory Grown Diamond was created by Chemical Vapor Deposition (CVD) growth process. Type IIa

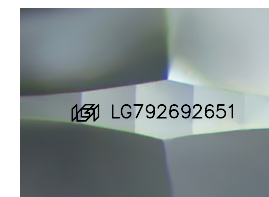
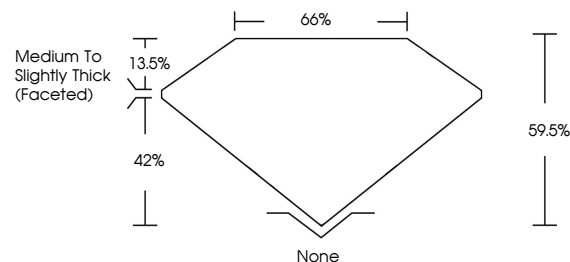
LABORATORY GROWN DIAMOND REPORT

April 29, 2026
IGI Report Number **LG792692651**
Description **LABORATORY GROWN DIAMOND**
Shape and Cutting Style **ROUND MODIFIED BRILLIANT**
Measurements **7.16 - 7.19 X 4.28 MM**

GRADING RESULTS
Carat Weight **1.50 CARAT**
Color Grade **F**
Clarity Grade **VS 1**

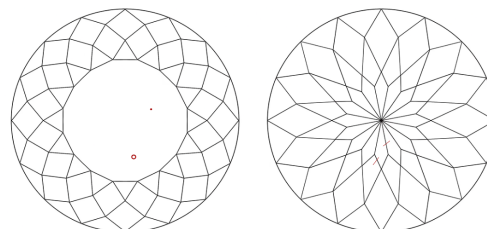
ADDITIONAL GRADING INFORMATION
Polish **EXCELLENT**
Symmetry **EXCELLENT**
Fluorescence **NONE**
Inscription(s) **(IGI) LG792692651**
Comments: This Laboratory Grown Diamond was created by Chemical Vapor Deposition (CVD) growth process. Type IIa

PROPORTIONS



Sample Image Used

CLARITY CHARACTERISTICS



KEY TO SYMBOLS

Red symbols indicate internal characteristics.
Green symbols indicate external characteristics.

COLOR

D E F G H I J Faint Very Light Light

CLARITY

FL	IF	VS ¹⁻²	VS ¹⁻²	SI ¹⁻²	I ¹⁻³
Flawless	Internally Flawless	Very Very Slightly Included	Very Slightly Included	Slightly Included	Included

