



ELECTRONIC COPY

LG792691743
Report verification at igi.org



April 28, 2026

IGI Report Number **LG792691743**

Description **LABORATORY GROWN DIAMOND**

Shape and Cutting Style **ROUND BRILLIANT**

Measurements **9.29 - 9.35 X 5.77 MM**

GRADING RESULTS

Carat Weight **3.08 CARATS**

Color Grade **FANCY INTENSE PINK**

Clarity Grade **VS 1**

Cut Grade **IDEAL**

April 28, 2026
IGI Report Number **LG792691743**
Description **LABORATORY GROWN DIAMOND**
Shape and Cutting Style **ROUND BRILLIANT**
Measurements **9.29 - 9.35 X 5.77 MM**

GRADING RESULTS

Carat Weight **3.08 CARATS**

Color Grade **FANCY INTENSE PINK**

Clarity Grade **VS 1**

Cut Grade **IDEAL**

ADDITIONAL GRADING INFORMATION

Polish **EXCELLENT**

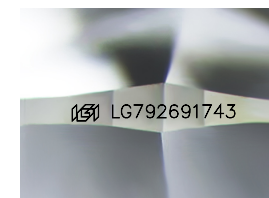
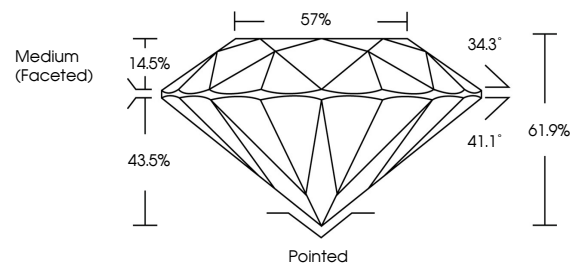
Symmetry **EXCELLENT**

Fluorescence **SLIGHT**

Inscription(s) **IGI LG792691743**

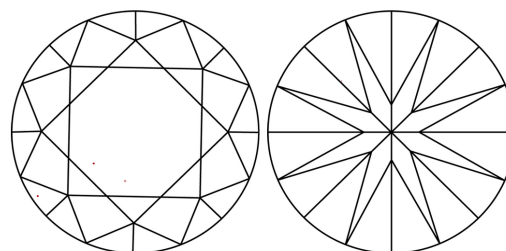
Comments: This Laboratory Grown Diamond was created by Chemical Vapor Deposition (CVD) growth process.
Indications of post-growth treatment.

PROPORTIONS



Sample Image Used

CLARITY CHARACTERISTICS



KEY TO SYMBOLS

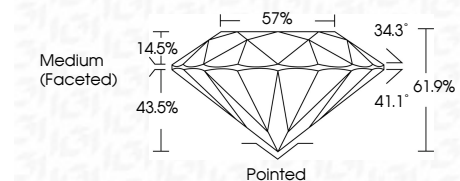
Red symbols indicate internal characteristics.
Green symbols indicate external characteristics.

COLOR

D E F G H I J Faint Very Light Light

CLARITY

FL	IF	VS ¹⁻²	VS ¹⁻²	SI ¹⁻²	I ¹⁻³
Flawless	Internally Flawless	Very Very Slightly Included	Very Slightly Included	Slightly Included	Included



ADDITIONAL GRADING INFORMATION

Polish **EXCELLENT**

Symmetry **EXCELLENT**

Fluorescence **SLIGHT**

Inscription(s) **IGI LG792691743**

Comments: This Laboratory Grown Diamond was created by Chemical Vapor Deposition (CVD) growth process.
Indications of post-growth treatment.



April 28, 2026
IGI Report No LG792691743
ROUND BRILLIANT

3.08 CARATS
Carat Weight
FANCY INTENSE PINK
Color Grade
VS 1
CLARITY GRADE
CLARITY GRADE
IDEAL
Depth
61.9%
Table
57%
Girdle
Medium (Faceted)

Pointed
EXCELLENT
EXCELLENT
SLIGHT
IGI LG792691743

Comments: This Laboratory Grown Diamond was created by Chemical Vapor Deposition (CVD) growth process.
Indications of post-growth treatment.