



ELECTRONIC COPY

LG792691728
Report verification at igi.org



April 27, 2026
IGI Report Number **LG792691728**
Description **LABORATORY GROWN DIAMOND**
Shape and Cutting Style **ROUND BRILLIANT**
Measurements **8.74 - 8.79 X 5.38 MM**
GRADING RESULTS
Carat Weight **2.54 CARATS**
Color Grade **FANCY PINK**
Clarity Grade **VVS 2**
Cut Grade **IDEAL**

April 27, 2026
IGI Report Number **LG792691728**
Description **LABORATORY GROWN DIAMOND**
Shape and Cutting Style **ROUND BRILLIANT**
Measurements **8.74 - 8.79 X 5.38 MM**

GRADING RESULTS

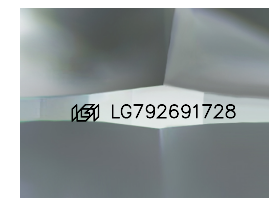
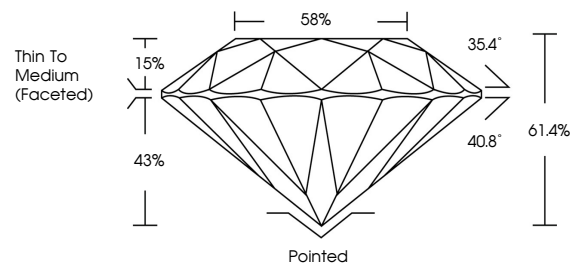
Carat Weight **2.54 CARATS**
Color Grade **FANCY PINK**
Clarity Grade **VVS 2**
Cut Grade **IDEAL**

ADDITIONAL GRADING INFORMATION

Polish **EXCELLENT**
Symmetry **EXCELLENT**
Fluorescence **SLIGHT**
Inscription(s) **IGI LG792691728**

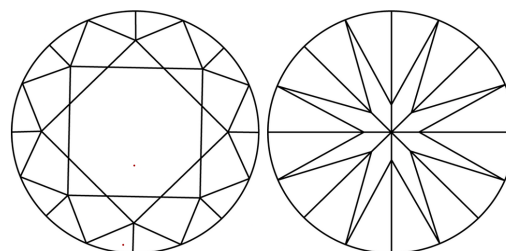
Comments: This Laboratory Grown Diamond was created by Chemical Vapor Deposition (CVD) growth process.
Indications of post-growth treatment.

PROPORTIONS



Sample Image Used

CLARITY CHARACTERISTICS



KEY TO SYMBOLS

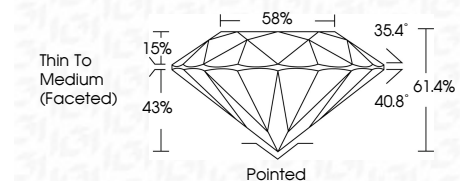
Red symbols indicate internal characteristics.
Green symbols indicate external characteristics.

COLOR

D E F G H I J Faint Very Light Light

CLARITY

FL	IF	VVS ¹⁻²	VS ¹⁻²	SI ¹⁻²	I ¹⁻³
Flawless	Internally Flawless	Very Very Slightly Included	Very Slightly Included	Slightly Included	Included



ADDITIONAL GRADING INFORMATION

Polish **EXCELLENT**
Symmetry **EXCELLENT**
Fluorescence **SLIGHT**
Inscription(s) **IGI LG792691728**
Comments: This Laboratory Grown Diamond was created by Chemical Vapor Deposition (CVD) growth process.
Indications of post-growth treatment.



April 27, 2026
IGI Report No LG792691728
ROUND BRILLIANT
8.74 - 8.79 X 5.38 MM
2.54 CARATS
FANCY PINK
VVS 2
IDEAL
61.4%
58%
Thin To Medium (Faceted)
Pointed
EXCELLENT
EXCELLENT
SLIGHT
IGI LG792691728
Comments: This Laboratory Grown Diamond was created by Chemical Vapor Deposition (CVD) growth process.
Indications of post-growth treatment.