



ELECTRONIC COPY

LG792687887
Report verification at igi.org



April 23, 2026
IGI Report Number **LG792687887**
Description **LABORATORY GROWN DIAMOND**
Shape and Cutting Style **ROUND BRILLIANT**
Measurements **7.44 - 7.51 X 4.48 MM**
GRADING RESULTS
Carat Weight **1.53 CARAT**
Color Grade **H**
Clarity Grade **VS 2**
Cut Grade **VERY GOOD**

April 23, 2026
IGI Report Number **LG792687887**
Description **LABORATORY GROWN DIAMOND**
Shape and Cutting Style **ROUND BRILLIANT**
Measurements **7.44 - 7.51 X 4.48 MM**

GRADING RESULTS

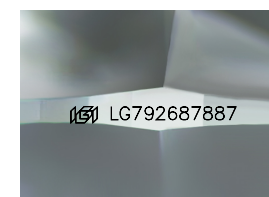
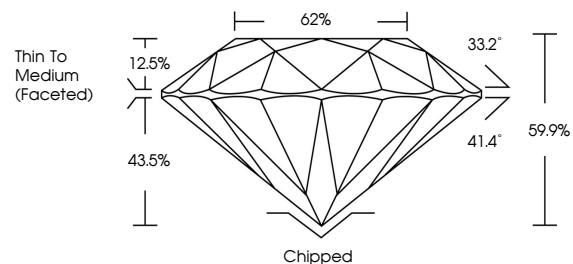
Carat Weight **1.53 CARAT**
Color Grade **H**
Clarity Grade **VS 2**
Cut Grade **VERY GOOD**

ADDITIONAL GRADING INFORMATION

Polish **GOOD**
Symmetry **EXCELLENT**
Fluorescence **NONE**
Inscription(s) **IGI LG792687887**

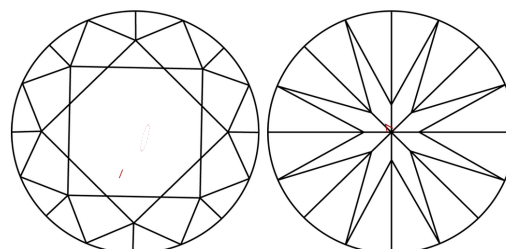
Comments: HEARTS & ARROWS
This Laboratory Grown Diamond was created by
Chemical Vapor Deposition (CVD) growth process.
Type IIa

PROPORTIONS



Sample Image Used

CLARITY CHARACTERISTICS



KEY TO SYMBOLS

Red symbols indicate internal characteristics.
Green symbols indicate external characteristics.

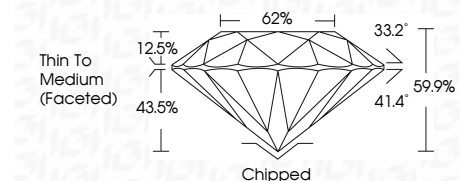


COLOR

D E F G H I J Faint Very Light Light

CLARITY

FL	IF	VS ¹⁻²	VS ¹⁻²	SI ¹⁻²	I ¹⁻³
Flawless	Internally Flawless	Very Very Slightly Included	Very Slightly Included	Slightly Included	Included



ADDITIONAL GRADING INFORMATION

Polish **GOOD**
Symmetry **EXCELLENT**
Fluorescence **NONE**
Inscription(s) **IGI LG792687887**
Comments: HEARTS & ARROWS
This Laboratory Grown Diamond was created by
Chemical Vapor Deposition (CVD) growth process.
Type IIa



April 23, 2026
IGI Report No LG792687887
ROUND BRILLIANT
7.44 - 7.51 X 4.48 MM
Carat Weight **1.53 CARAT**
Color Grade **H**
Clarity Grade **VS 2**
Depth **61.9%**
Table **62%**
Girdle **Thin To Medium (Faceted)**
Culet **Chipped**
Polish **GOOD**
Symmetry **EXCELLENT**
Fluorescence **NONE**
Inscription(s) **IGI LG792687887**
Comments: HEARTS & ARROWS
This Laboratory Grown Diamond was created by Chemical Vapor Deposition (CVD) growth process.
Type IIa