



ELECTRONIC COPY

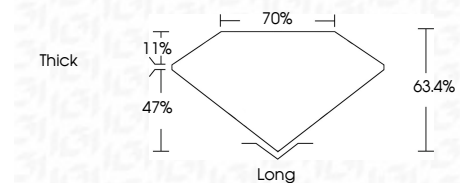
LG792685905
Report verification at igi.org



May 2, 2026
IGI Report Number **LG792685905**
Description **LABORATORY GROWN DIAMOND**
Shape and Cutting Style **EMERALD CUT**
Measurements **13.53 X 9.46 X 6.00 MM**

GRADING RESULTS

Carat Weight **8.03 CARATS**
Color Grade **G**
Clarity Grade **VS 2**



ADDITIONAL GRADING INFORMATION

Polish **EXCELLENT**
Symmetry **EXCELLENT**
Fluorescence **NONE**
Inscription(s) **IGI LG792685905**
Comments: This Laboratory Grown Diamond was created by Chemical Vapor Deposition (CVD) growth process. Type IIa



May 2, 2026
IGI Report No LG792685905
EMERALD CUT
13.53 X 9.46 X 6.00 MM
8.03 CARATS
Color Grade G
Clarity Grade VS 2
Depth 63.4%
Table 70%
Girdle Thick
Culet Long
Polish EXCELLENT
Symmetry EXCELLENT
Fluorescence NONE
Inscription(s) IGI LG792685905
Comments: This Laboratory Grown Diamond was created by Chemical Vapor Deposition (CVD) growth process. Type IIa

LABORATORY GROWN DIAMOND REPORT

May 2, 2026
IGI Report Number **LG792685905**
Description **LABORATORY GROWN DIAMOND**
Shape and Cutting Style **EMERALD CUT**
Measurements **13.53 X 9.46 X 6.00 MM**

GRADING RESULTS

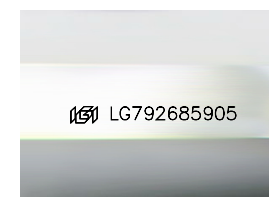
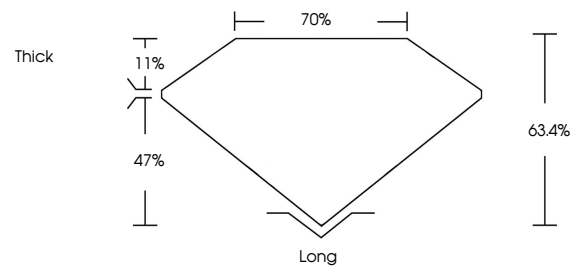
Carat Weight **8.03 CARATS**
Color Grade **G**
Clarity Grade **VS 2**

ADDITIONAL GRADING INFORMATION

Polish **EXCELLENT**
Symmetry **EXCELLENT**
Fluorescence **NONE**
Inscription(s) **IGI LG792685905**

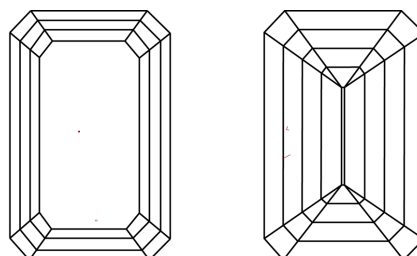
Comments: This Laboratory Grown Diamond was created by Chemical Vapor Deposition (CVD) growth process. Type IIa

PROPORTIONS



Sample Image Used

CLARITY CHARACTERISTICS



KEY TO SYMBOLS

Red symbols indicate internal characteristics.
Green symbols indicate external characteristics.

COLOR

D E F G H I J Faint Very Light Light

CLARITY

FL	IF	VS ¹⁻²	VS ¹⁻²	SI ¹⁻²	I ¹⁻³
Flawless	Internally Flawless	Very Very Slightly Included	Very Slightly Included	Slightly Included	Included