



**ELECTRONIC COPY**

LG792685595  
Report verification at [igi.org](http://igi.org)



April 18, 2026  
IGI Report Number **LG792685595**  
Description **LABORATORY GROWN DIAMOND**  
Shape and Cutting Style **CUSHION MODIFIED BRILLIANT**  
Measurements **11.14 X 7.20 X 4.83 MM**  
**GRADING RESULTS**  
Carat Weight **3.00 CARATS**  
Color Grade **F**  
Clarity Grade **VVS 2**

April 18, 2026  
IGI Report Number **LG792685595**  
Description **LABORATORY GROWN DIAMOND**  
Shape and Cutting Style **CUSHION MODIFIED BRILLIANT**  
Measurements **11.14 X 7.20 X 4.83 MM**

**GRADING RESULTS**

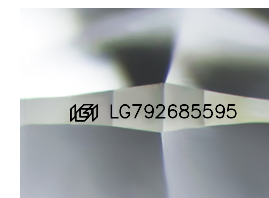
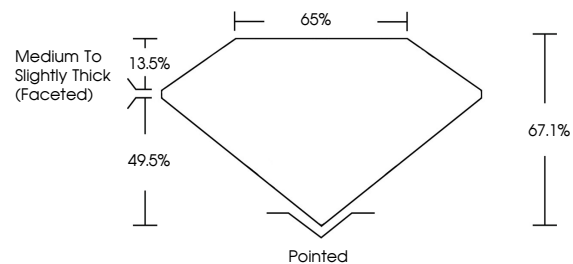
Carat Weight **3.00 CARATS**  
Color Grade **F**  
Clarity Grade **VVS 2**

**ADDITIONAL GRADING INFORMATION**

Polish **EXCELLENT**  
Symmetry **EXCELLENT**  
Fluorescence **NONE**  
Inscription(s) **IGI LG792685595**

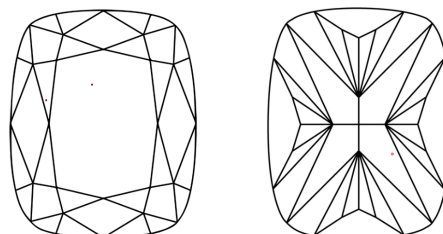
Comments: This Laboratory Grown Diamond was created by Chemical Vapor Deposition (CVD) growth process.  
Type IIa

**PROPORTIONS**



Sample Image Used

**CLARITY CHARACTERISTICS**



**KEY TO SYMBOLS**

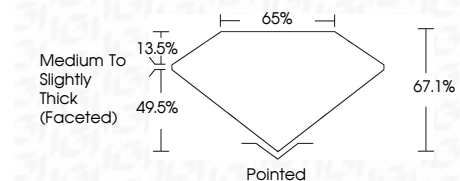
Red symbols indicate internal characteristics.  
Green symbols indicate external characteristics.

**COLOR**

D E F G H I J Faint Very Light Light

**CLARITY**

FL	IF	VVS <sup>1-2</sup>	VS <sup>1-2</sup>	SI <sup>1-2</sup>	I <sup>1-3</sup>
Flawless	Internally Flawless	Very Very Slightly Included	Very Slightly Included	Slightly Included	Included



**ADDITIONAL GRADING INFORMATION**

Polish **EXCELLENT**  
Symmetry **EXCELLENT**  
Fluorescence **NONE**  
Inscription(s) **IGI LG792685595**  
Comments: This Laboratory Grown Diamond was created by Chemical Vapor Deposition (CVD) growth process.  
Type IIa



April 18, 2026  
IGI Report No **LG792685595**  
**CUSHION MODIFIED BRILLIANT**  
11.14 X 7.20 X 4.83 MM  
3.00 CARATS  
F  
3.00 CARATS  
VVS 2  
67.1%  
65%  
Medium to Slightly Thick (Faceted)  
Pointed  
EXCELLENT  
EXCELLENT  
NONE  
IGI LG792685595  
Comments: This Laboratory Grown Diamond was created by Chemical Vapor Deposition (CVD) growth process.  
Type IIa