



May 2, 2026

**IGI Report Number** LG792685422  
**EMERALD ROSE CUT**  
**LABORATORY GROWN DIAMOND**  
**7.81 X 5.22 X 1.47 MM**

Carat Weight **0.75 CARAT**  
Color Grade **F**  
Clarity Grade **VVS 2**  
Polish **EXCELLENT**  
Symmetry **EXCELLENT**  
Fluorescence **NONE**  
Inscription(s) **IGI LG792685422**

Comments: This Laboratory Grown Diamond was created by Chemical Vapor Deposition (CVD) growth process. Type IIa

**LABORATORY GROWN DIAMOND REPORT**

May 2, 2026  
IGI Report Number **LG792685422**  
Description **LABORATORY GROWN DIAMOND**  
Shape and Cutting Style **EMERALD ROSE CUT**  
Measurements **7.81 X 5.22 X 1.47 MM**

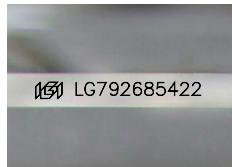
**GRADING RESULTS**

Carat Weight **0.75 CARAT**  
Color Grade **F**  
Clarity Grade **VVS 2**

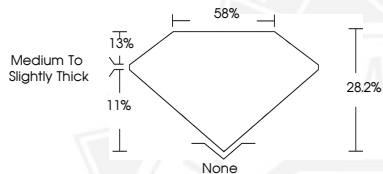
**ADDITIONAL GRADING INFORMATION**

Polish **EXCELLENT**  
Symmetry **EXCELLENT**  
Fluorescence **NONE**  
Inscription(s) **IGI LG792685422**

Comments: This Laboratory Grown Diamond was created by Chemical Vapor Deposition (CVD) growth process.  
Type IIa



Sample Image Used



May 2, 2026

**IGI Report Number** LG792685422  
**EMERALD ROSE CUT**  
**LABORATORY GROWN DIAMOND**  
**7.81 X 5.22 X 1.47 MM**

Carat Weight **0.75 CARAT**  
Color Grade **F**  
Clarity Grade **VVS 2**  
Polish **EXCELLENT**  
Symmetry **EXCELLENT**  
Fluorescence **NONE**  
Inscription(s) **IGI LG792685422**

Comments: This Laboratory Grown Diamond was created by Chemical Vapor Deposition (CVD) growth process. Type IIa



THIS DOCUMENT WAS PRODUCED WITH THE FOLLOWING SECURITY MEASURES: SPECIAL DOCUMENT PAPER, INK SCREENS, WATERMARK, BACKGROUND DESIGNS, HOLOGRAM AND OTHER SECURITY FEATURES NOT LISTED AND DO EXCEED DOCUMENT SECURITY INDUSTRY GUIDELINES.