



**ELECTRONIC COPY**

LG792676136  
Report verification at igi.org



May 7, 2026

IGI Report Number **LG792676136**

Description **LABORATORY GROWN DIAMOND**

Shape and Cutting Style **HEART BRILLIANT**

Measurements **6.14 X 6.92 X 3.98 MM**

**GRADING RESULTS**

Carat Weight **1.00 CARAT**

Color Grade **FANCY VIVID BLUE**

Clarity Grade **VS 2**

May 7, 2026  
IGI Report Number **LG792676136**  
Description **LABORATORY GROWN DIAMOND**  
Shape and Cutting Style **HEART BRILLIANT**  
Measurements **6.14 X 6.92 X 3.98 MM**

**GRADING RESULTS**

Carat Weight **1.00 CARAT**

Color Grade **FANCY VIVID BLUE**

Clarity Grade **VS 2**

**ADDITIONAL GRADING INFORMATION**

Polish **EXCELLENT**

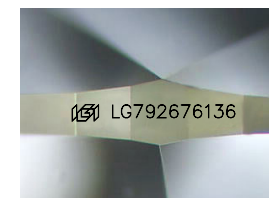
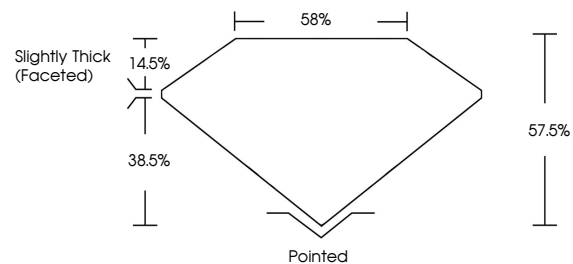
Symmetry **EXCELLENT**

Fluorescence **NONE**

Inscription(s) **IGI LG792676136**

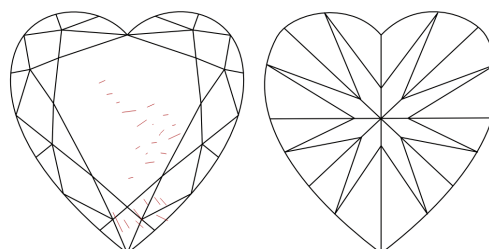
Comments: This Laboratory Grown Diamond was created by High Pressure High Temperature (HPHT) growth process.  
Indications of post-growth treatment.

**PROPORTIONS**



Sample Image Used

**CLARITY CHARACTERISTICS**



**KEY TO SYMBOLS**

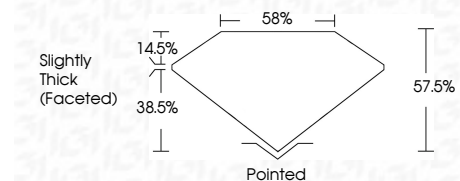
Red symbols indicate internal characteristics.  
Green symbols indicate external characteristics.

**COLOR**

D E F G H I J Faint Very Light Light

**CLARITY**

FL	IF	VS <sup>1-2</sup>	VS <sup>1-2</sup>	SI <sup>1-2</sup>	I <sup>1-3</sup>
Flawless	Internally Flawless	Very Very Slightly Included	Very Slightly Included	Slightly Included	Included



**ADDITIONAL GRADING INFORMATION**

Polish **EXCELLENT**

Symmetry **EXCELLENT**

Fluorescence **NONE**

Inscription(s) **IGI LG792676136**

Comments: This Laboratory Grown Diamond was created by High Pressure High Temperature (HPHT) growth process.  
Indications of post-growth treatment.



May 7, 2026	1.00 CARAT	HEART BRILLIANT	VS 2	Polished
IGI Report No LG792676136	6.14 X 6.92 X 3.98 MM	FANCY VIVID BLUE	57.05%	EXCELLENT
			38%	EXCELLENT
			Slightly Thick (Faceted)	NONE
				IGI LG792676136

Comments: This Laboratory Grown Diamond was created by High Pressure High Temperature (HPHT) growth process. Indications of post-growth treatment.