



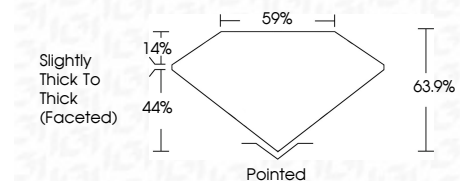
**ELECTRONIC COPY**

LG792675475  
Report verification at igi.org



May 4, 2026  
IGI Report Number **LG792675475**  
Description **LABORATORY GROWN DIAMOND**  
Shape and Cutting Style **OVAL MODIFIED BRILLIANT**  
Measurements **9.87 X 6.62 X 4.23 MM**

**GRADING RESULTS**  
Carat Weight **2.05 CARATS**  
Color Grade **LIGHT BROWN**  
Clarity Grade **SI 1**



**ADDITIONAL GRADING INFORMATION**  
Polish **EXCELLENT**  
Symmetry **EXCELLENT**  
Fluorescence **NONE**  
Inscription(s) **(IGI) LG792675475**  
Comments: This Laboratory Grown Diamond was created by Chemical Vapor Deposition (CVD) growth process. Type IIa



May 4, 2026  
IGI Report No **LG792675475**  
**OVAL MODIFIED BRILLIANT**  
Carat Weight **2.05 CARATS**  
Color Grade **LIGHT BROWN**  
Clarity Grade **SI 1**  
Depth **63.9%**  
Table **59%**  
Girdle **Slightly Thick To Thick (Faceted)**  
Culet **Pointed**  
Polish **EXCELLENT**  
Symmetry **EXCELLENT**  
Fluorescence **NONE**  
Inscription(s) **(IGI) LG792675475**  
Comments: This Laboratory Grown Diamond was created by Chemical Vapor Deposition (CVD) growth process. Type IIa

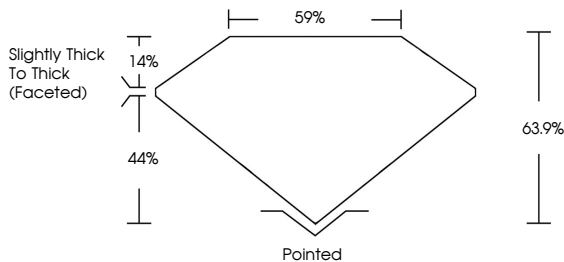
May 4, 2026  
IGI Report Number **LG792675475**  
Description **LABORATORY GROWN DIAMOND**  
Shape and Cutting Style **OVAL MODIFIED BRILLIANT**  
Measurements **9.87 X 6.62 X 4.23 MM**

**GRADING RESULTS**  
Carat Weight **2.05 CARATS**  
Color Grade **LIGHT BROWN**  
Clarity Grade **SI 1**

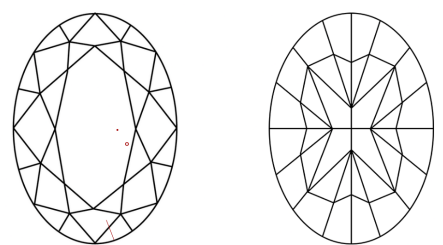
**ADDITIONAL GRADING INFORMATION**  
Polish **EXCELLENT**  
Symmetry **EXCELLENT**  
Fluorescence **NONE**  
Inscription(s) **(IGI) LG792675475**

Comments: This Laboratory Grown Diamond was created by Chemical Vapor Deposition (CVD) growth process. Type IIa

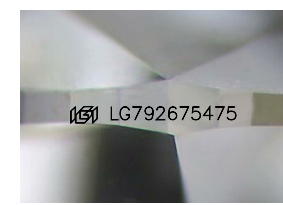
**PROPORTIONS**



**CLARITY CHARACTERISTICS**



**KEY TO SYMBOLS**  
Red symbols indicate internal characteristics.  
Green symbols indicate external characteristics.



Sample Image Used

**COLOR**

D	E	F	G	H	I	J	Faint	Very Light	Light
---	---	---	---	---	---	---	-------	------------	-------

**CLARITY**

FL	IF	VS <sup>1-2</sup>	VS <sup>1-2</sup>	SI <sup>1-2</sup>	I <sup>1-3</sup>
Flawless	Internally Flawless	Very Very Slightly Included	Very Slightly Included	Slightly Included	Included

