



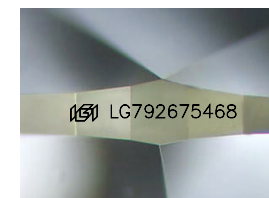
ELECTRONIC COPY

LG792675468
Report verification at igi.org



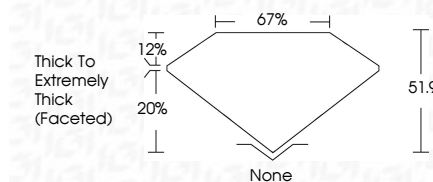
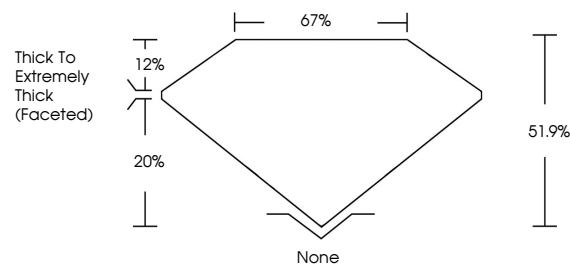
May 4, 2026
IGI Report Number **LG792675468**
Description **LABORATORY GROWN DIAMOND**
Shape and Cutting Style **HEART MODIFIED BRILLIANT**
Measurements **8.36 X 9.27 X 4.81 MM**

GRADING RESULTS
Carat Weight **3.02 CARATS**
Color Grade **FANCY YELLOW**
Clarity Grade **VS 1**

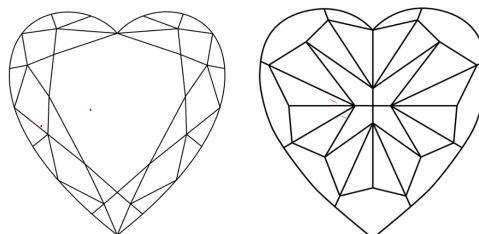


Sample Image Used

PROPORTIONS



CLARITY CHARACTERISTICS



KEY TO SYMBOLS

Red symbols indicate internal characteristics.
Green symbols indicate external characteristics.

COLOR

D E F G H I J Faint Very Light Light

CLARITY

FL	IF	VS ¹⁻²	VS ¹⁻²	SI ¹⁻²	I ¹⁻³
Flawless	Internally Flawless	Very Very Slightly Included	Very Slightly Included	Slightly Included	Included

ADDITIONAL GRADING INFORMATION

Polish **EXCELLENT**
Symmetry **EXCELLENT**
Fluorescence **NONE**
Inscription(s) **(IGI) LG792675468**
Comments: This Laboratory Grown Diamond was created by Chemical Vapor Deposition (CVD) growth process.



IGI



May 4, 2026
IGI Report No. **LG792675468**
HEART MODIFIED BRILLIANT
8.36 X 9.27 X 4.81 MM
Carat Weight **3.02 CARATS**
Color Grade **FANCY YELLOW**
Clarity Grade **VS 1**
Depth **67%**
Table **20%**
Girdle **Thick To Extremely Thick (Faceted)**
Culet **None**
Polish **EXCELLENT**
Symmetry **EXCELLENT**
Fluorescence **NONE**
Inscription(s) **(IGI) LG792675468**
Comments: This Laboratory Grown Diamond was created by Chemical Vapor Deposition (CVD) growth process.