



ELECTRONIC COPY

LG792675454
Report verification at igi.org



May 4, 2026

IGI Report Number **LG792675454**

Description **LABORATORY GROWN DIAMOND**

Shape and Cutting Style **PEAR BRILLIANT**

Measurements **12.47 X 7.83 X 4.45 MM**

GRADING RESULTS

Carat Weight **3.04 CARATS**

Color Grade **FANCY INTENSE YELLOW**

Clarity Grade **VVS 2**

May 4, 2026

IGI Report Number **LG792675454**

Description **LABORATORY GROWN DIAMOND**

Shape and Cutting Style **PEAR BRILLIANT**

Measurements **12.47 X 7.83 X 4.45 MM**

GRADING RESULTS

Carat Weight **3.04 CARATS**

Color Grade **FANCY INTENSE YELLOW**

Clarity Grade **VVS 2**

ADDITIONAL GRADING INFORMATION

Polish **EXCELLENT**

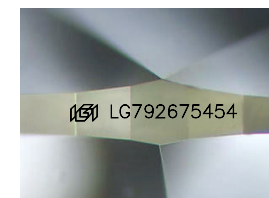
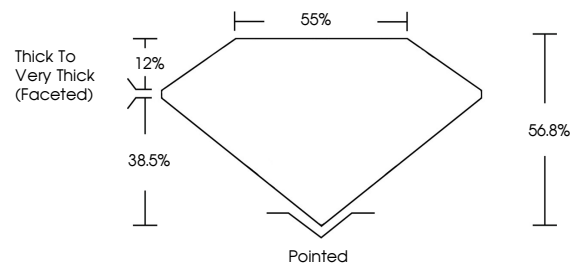
Symmetry **EXCELLENT**

Fluorescence **NONE**

Inscription(s) **IGI LG792675454**

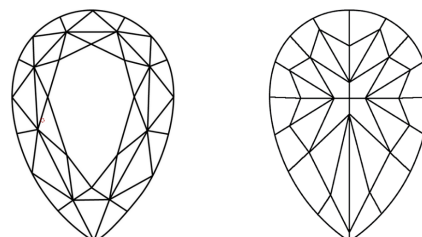
Comments: This Laboratory Grown Diamond was created by Chemical Vapor Deposition (CVD) growth process.

PROPORTIONS



Sample Image Used

CLARITY CHARACTERISTICS



KEY TO SYMBOLS

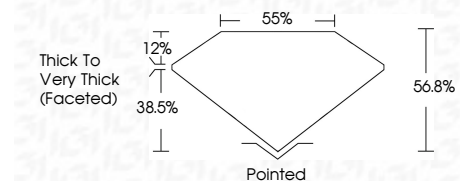
Red symbols indicate internal characteristics.
Green symbols indicate external characteristics.

COLOR

D E F G H I J Faint Very Light Light

CLARITY

FL	IF	VVS ¹⁻²	VS ¹⁻²	SI ¹⁻²	I ¹⁻³
Flawless	Internally Flawless	Very Very Slightly Included	Very Slightly Included	Slightly Included	Included



ADDITIONAL GRADING INFORMATION

Polish **EXCELLENT**

Symmetry **EXCELLENT**

Fluorescence **NONE**

Inscription(s) **IGI LG792675454**

Comments: This Laboratory Grown Diamond was created by Chemical Vapor Deposition (CVD) growth process.



IGI



May 4, 2026
IGI Report No LG792675454
PEAR BRILLIANT

3.04 CARATS
Carat Weight
FANCY INTENSE YELLOW
Color Grade
VVS 2
Clarity Grade
56.8%
Depth
38.5%
Table
Thick to Very Thick (Faceted)
Pointed
EXCELLENT
Polish
EXCELLENT
Symmetry
NONE
Fluorescence
IGI LG792675454
Inscription(s)

Comments: This Laboratory Grown Diamond was created by Chemical Vapor Deposition (CVD) growth process.